

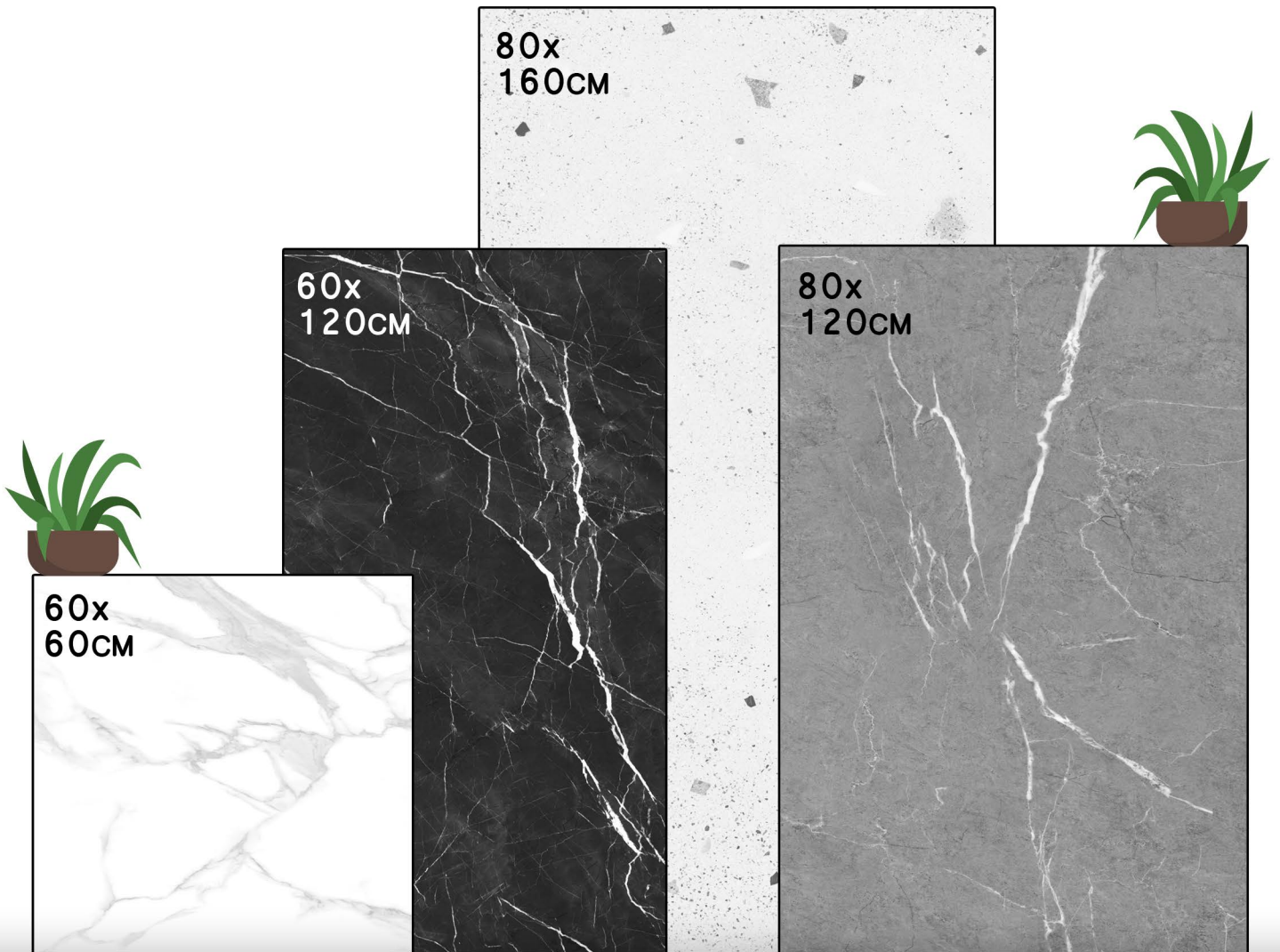


Matt

Series



Available Sizes



Dimensional
Stability



Acid
Resistance



Stain
Resistance



High
Durable



Home
Applicable



Factory
Applicable



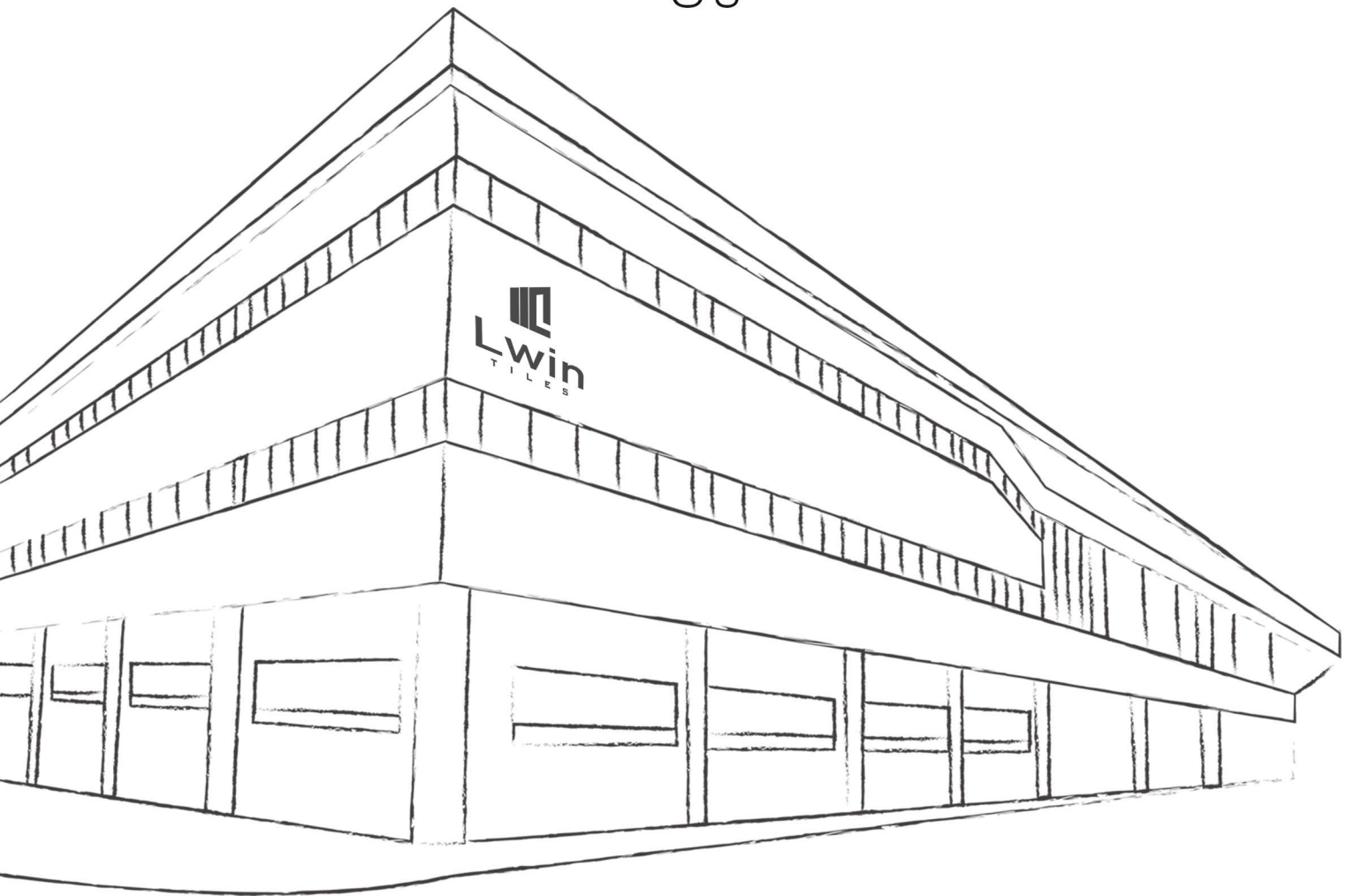
Supermart
Applicable



Hotel
Applicable



About Us



Our **Units** are well equipped with the best technology that allowing us to produce high-quality tiles with a cosistently impeccable finish.

Our excellent **Team** closely monitor every phase of the process. They put greatest effort to deliver on our commitments so that we can creat value for our customers.

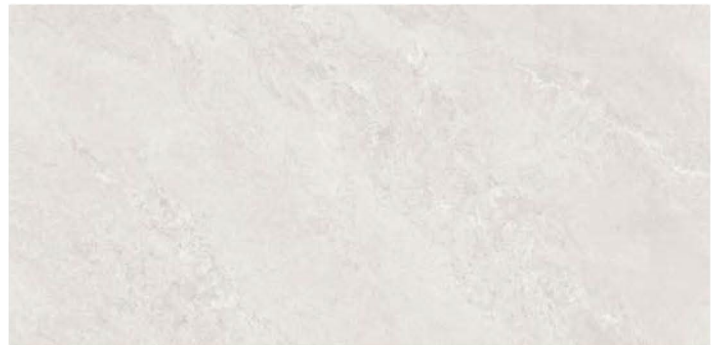
Our different and wide range of **Design** collections which consist of technical properties.



2342



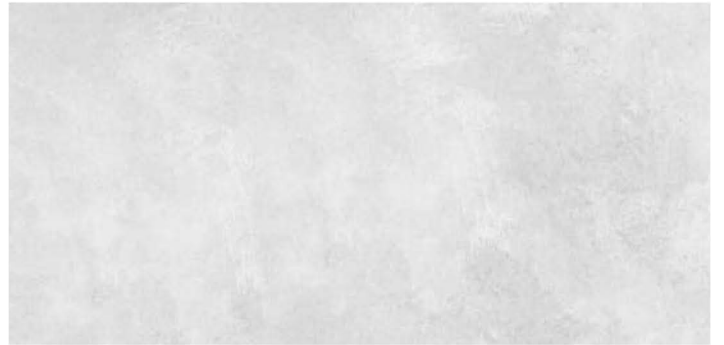
2343



2344



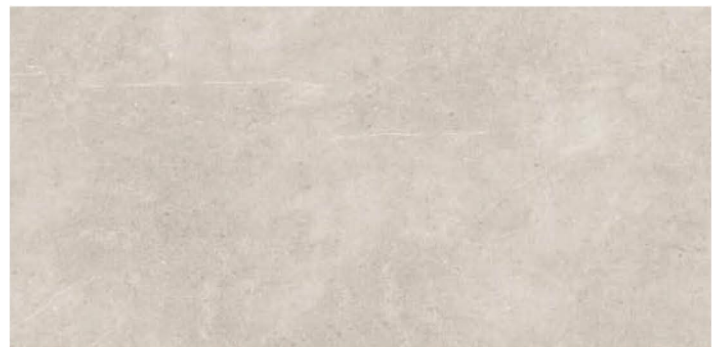
2345



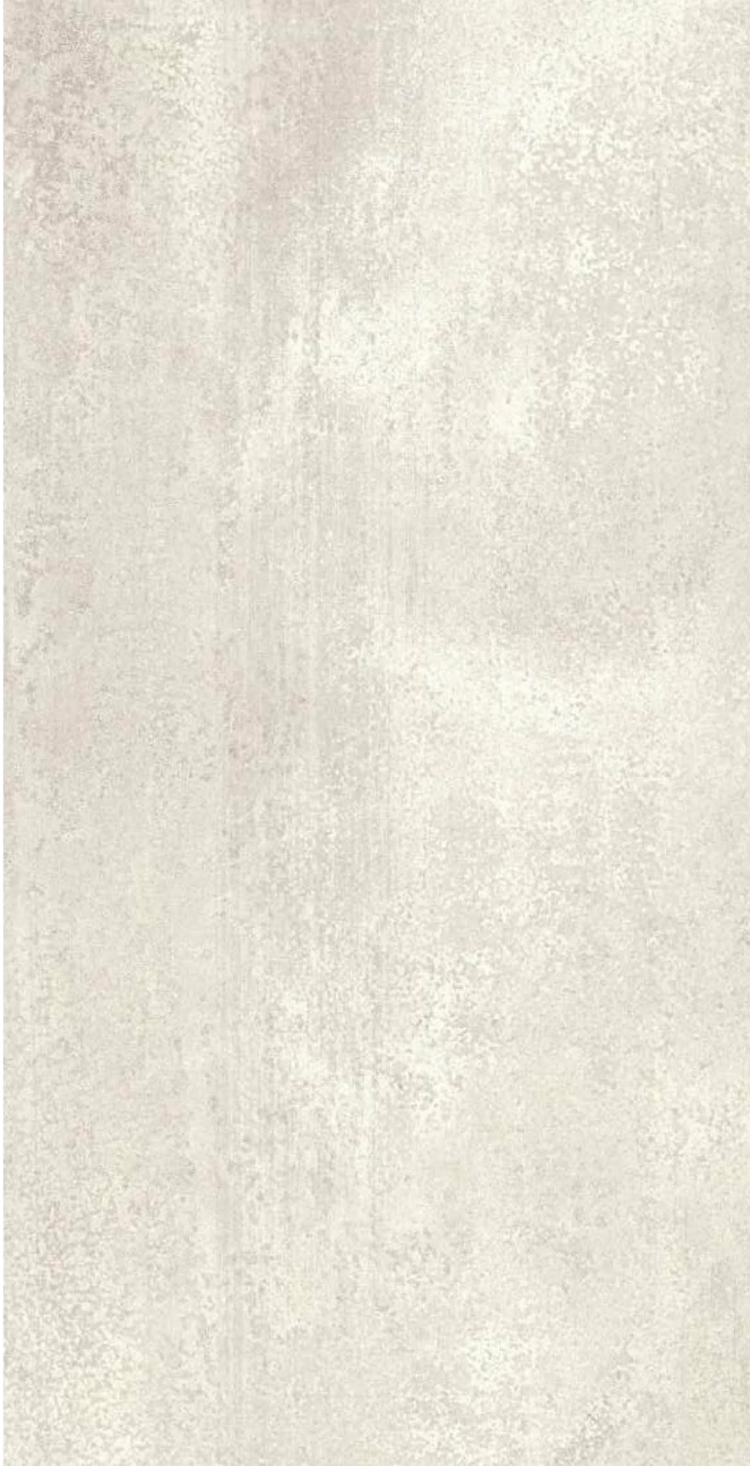
2346



2347



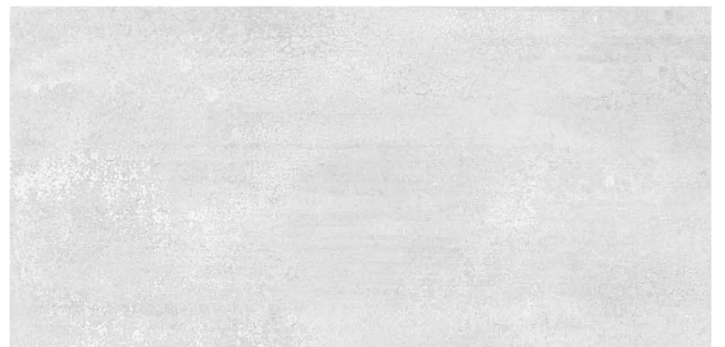
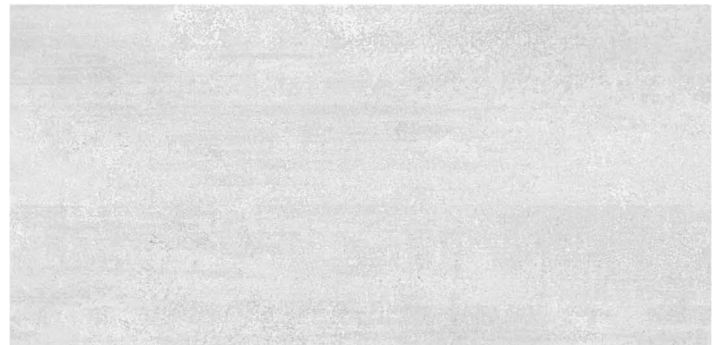
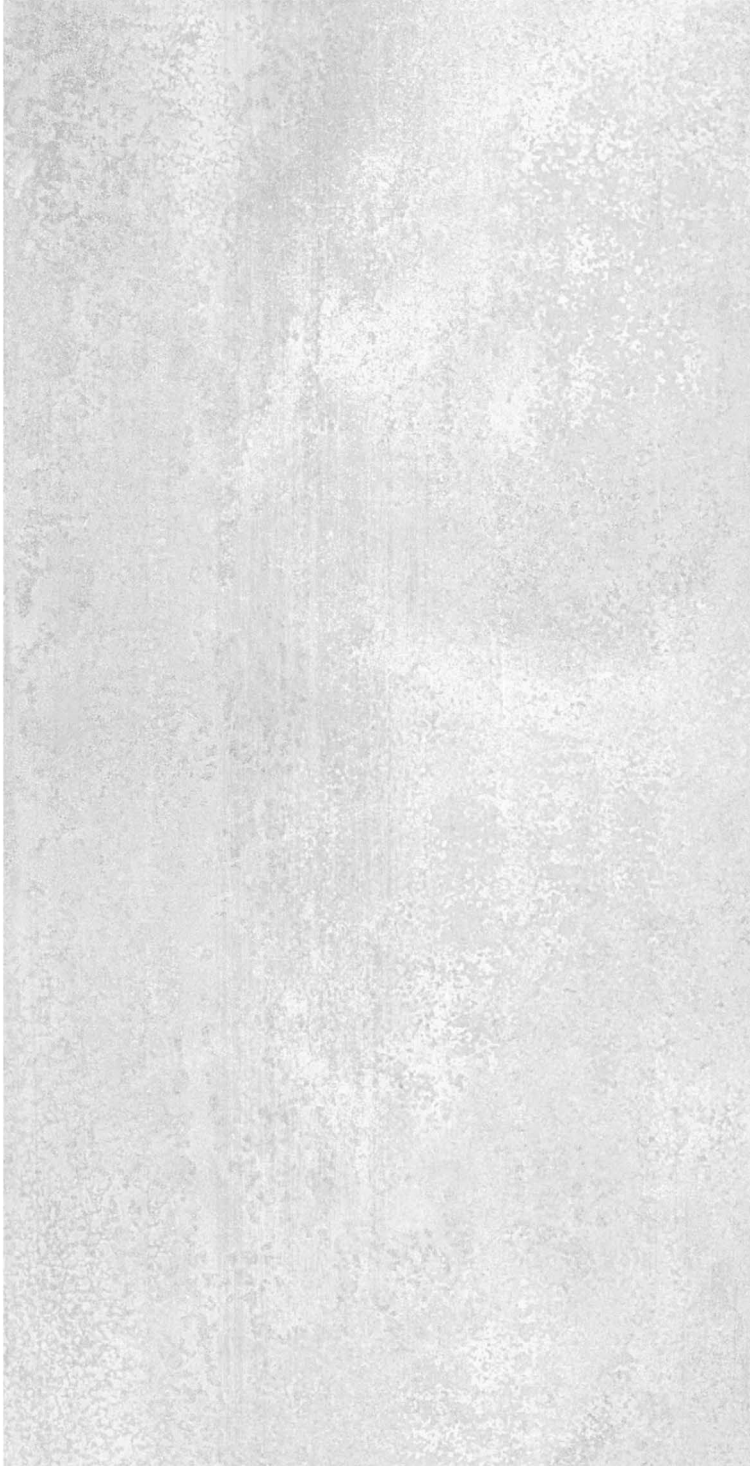
2348



2349



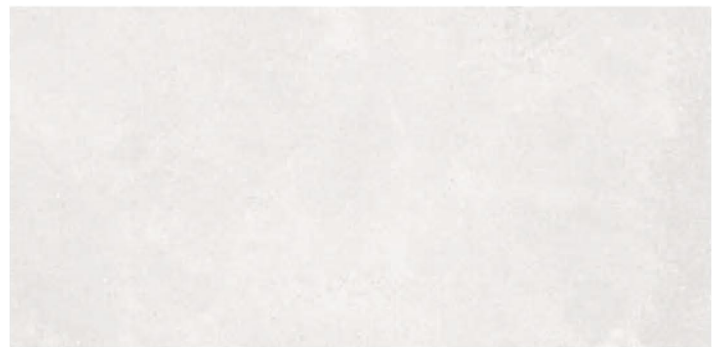
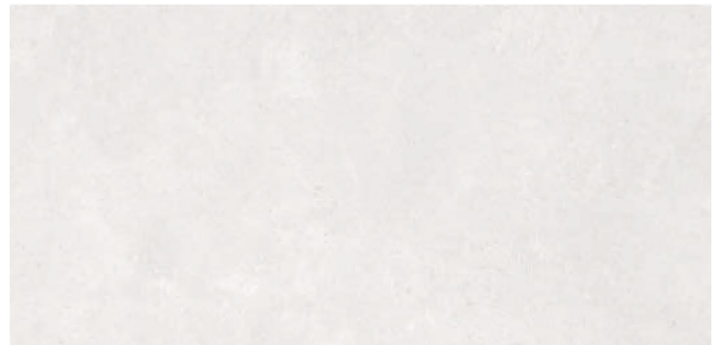
2350



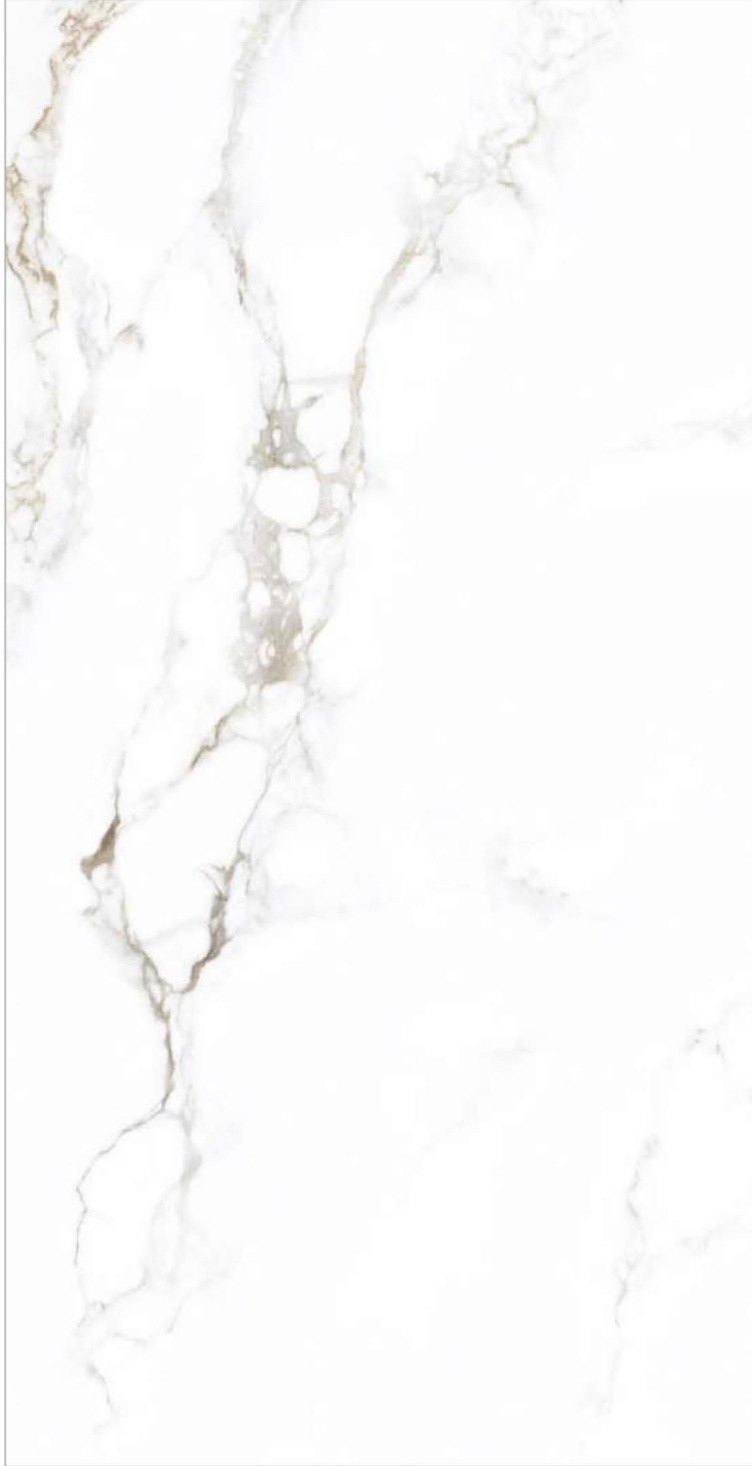
2351



2352



2353



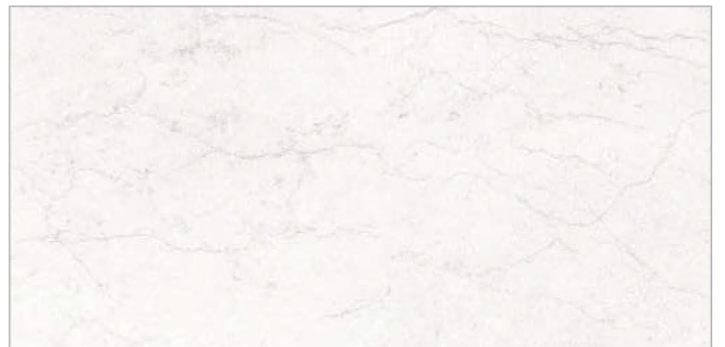
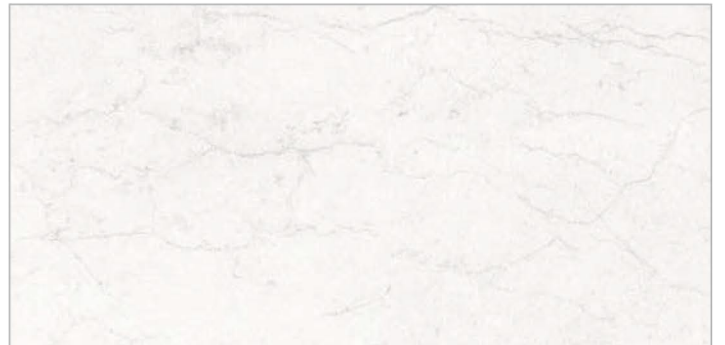
2354



2355



2356



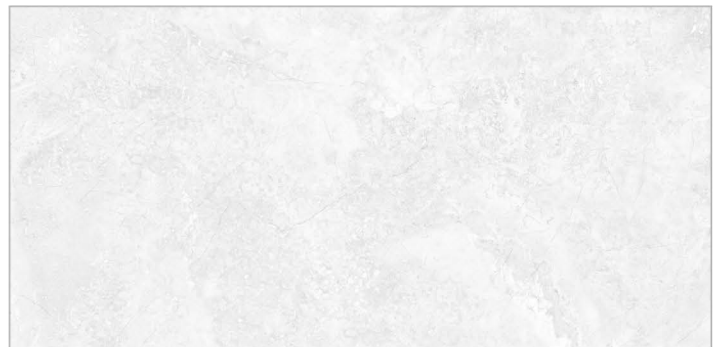
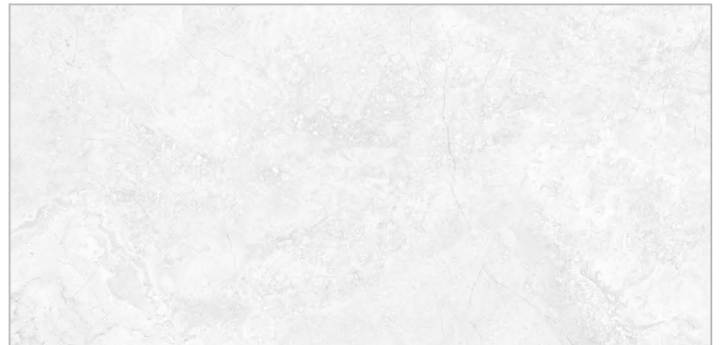
2357



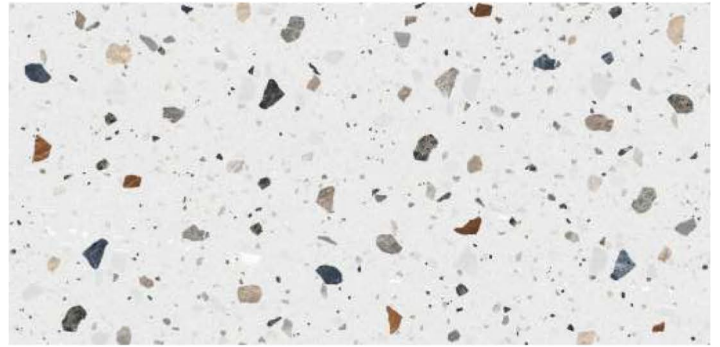
2358



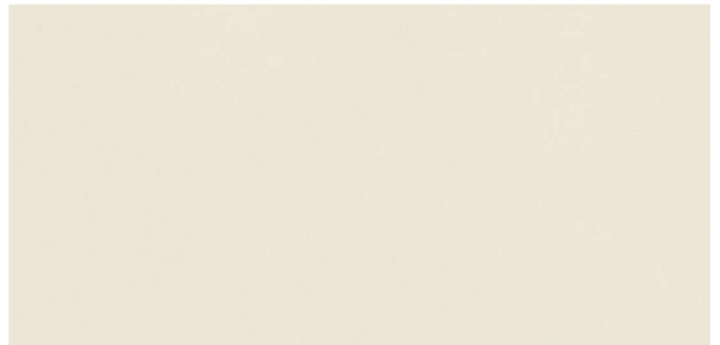
2359



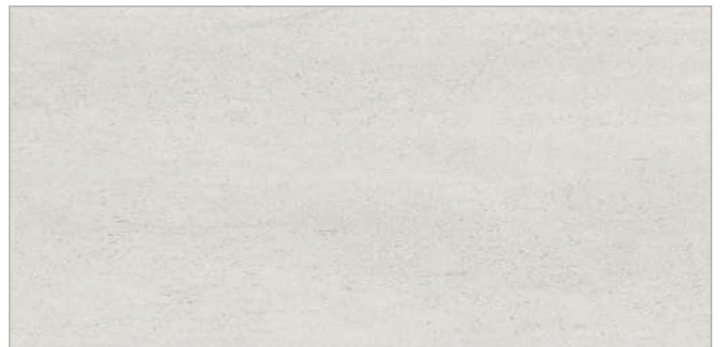
2360



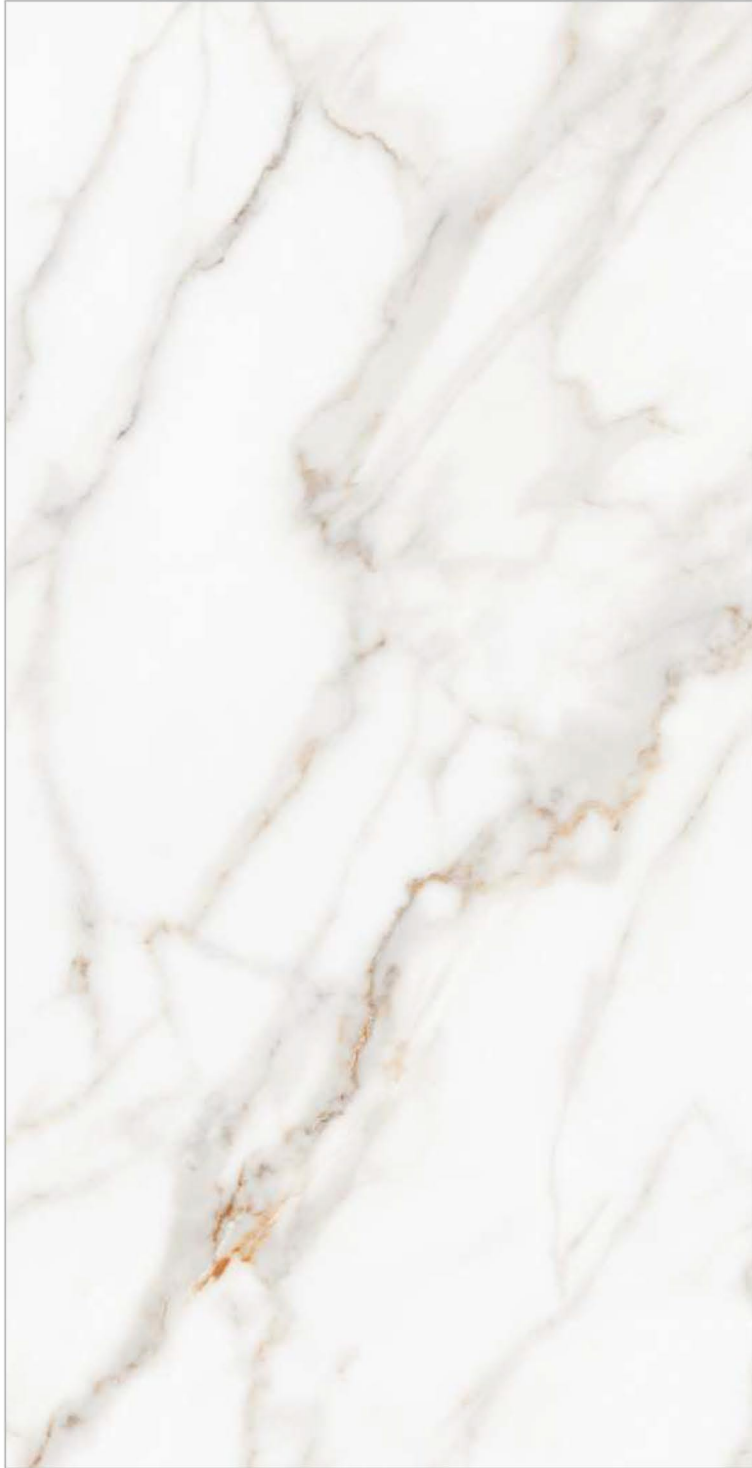
2361



2362



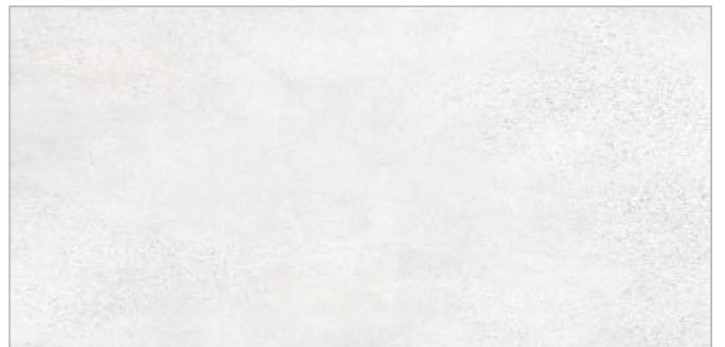
2363



2364



2365



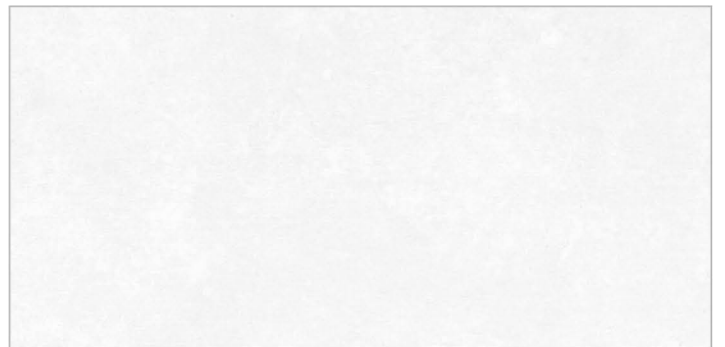
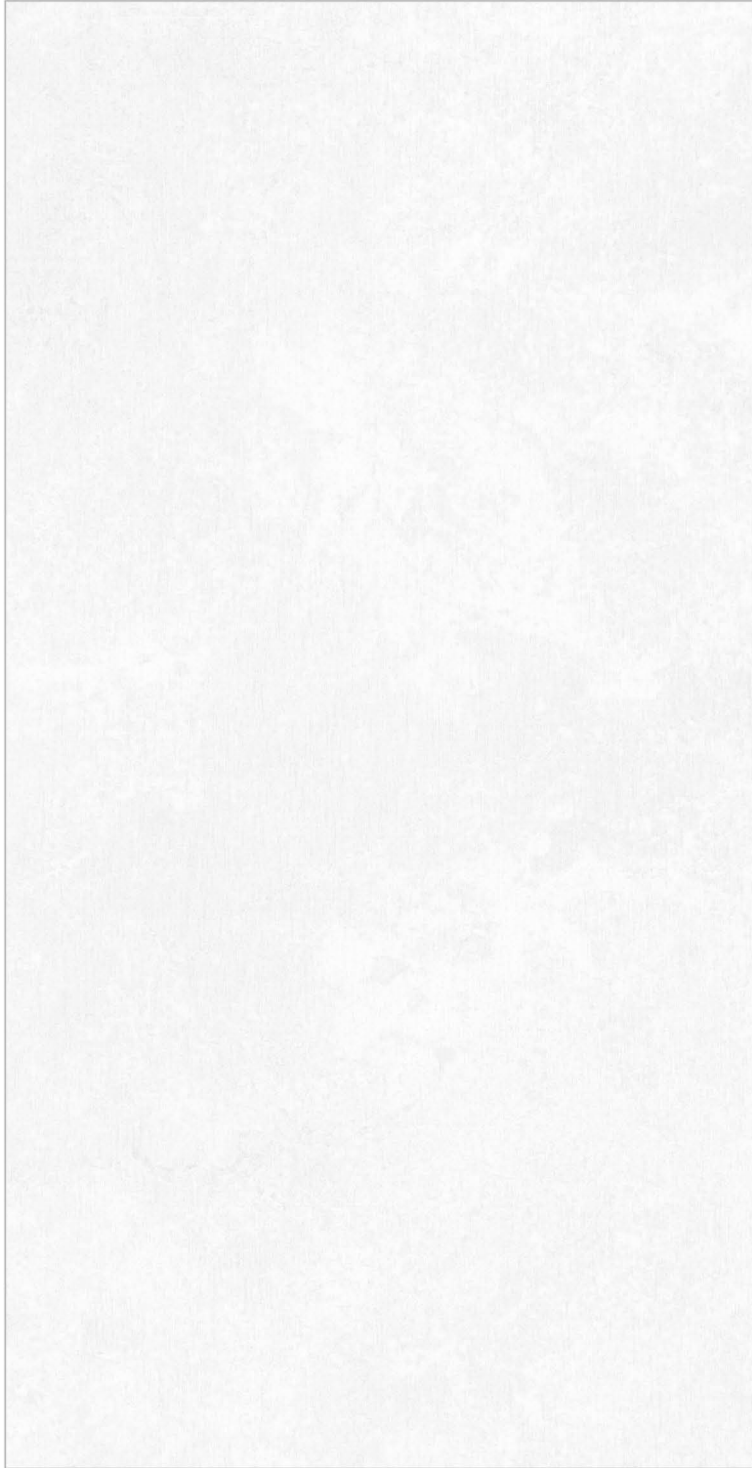
2366



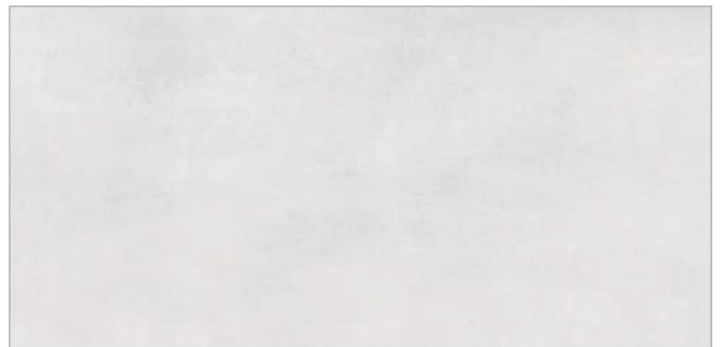
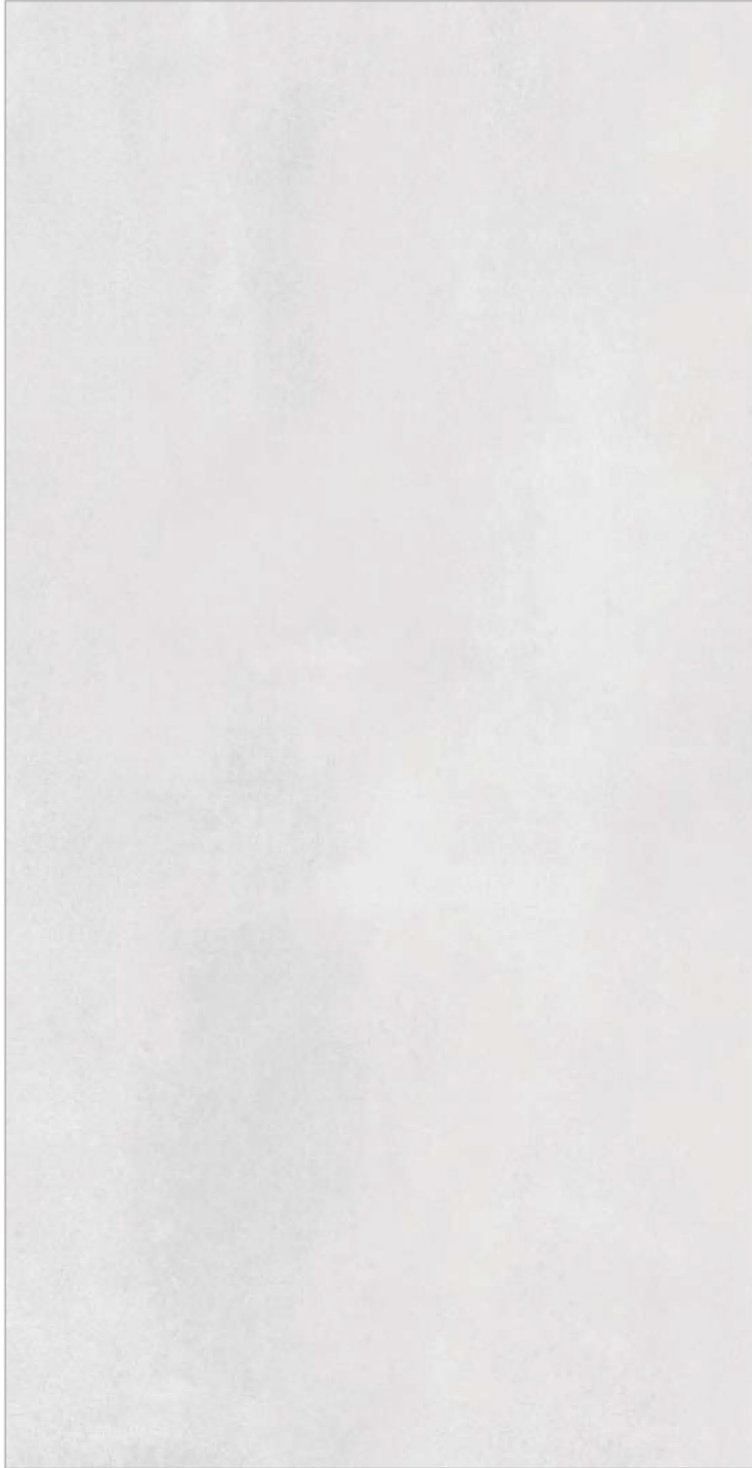
2367



2368



2369



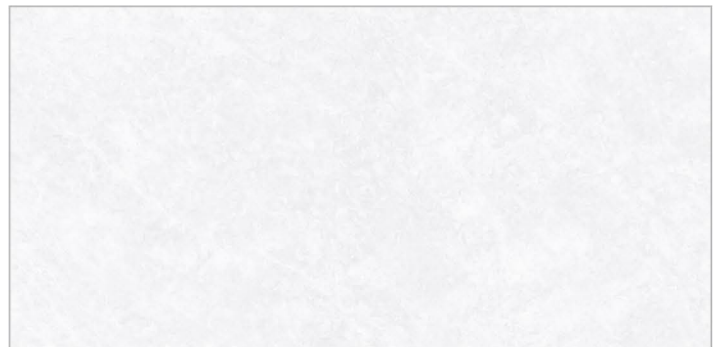
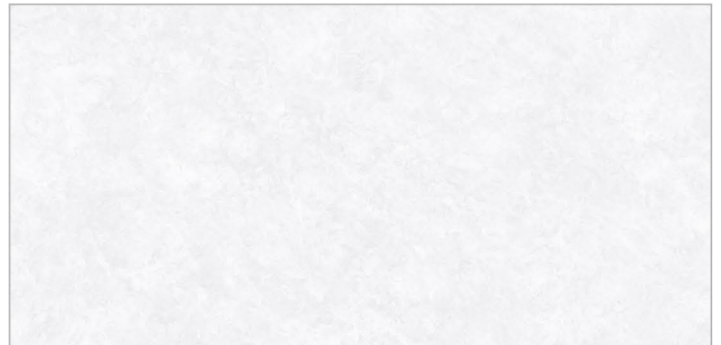
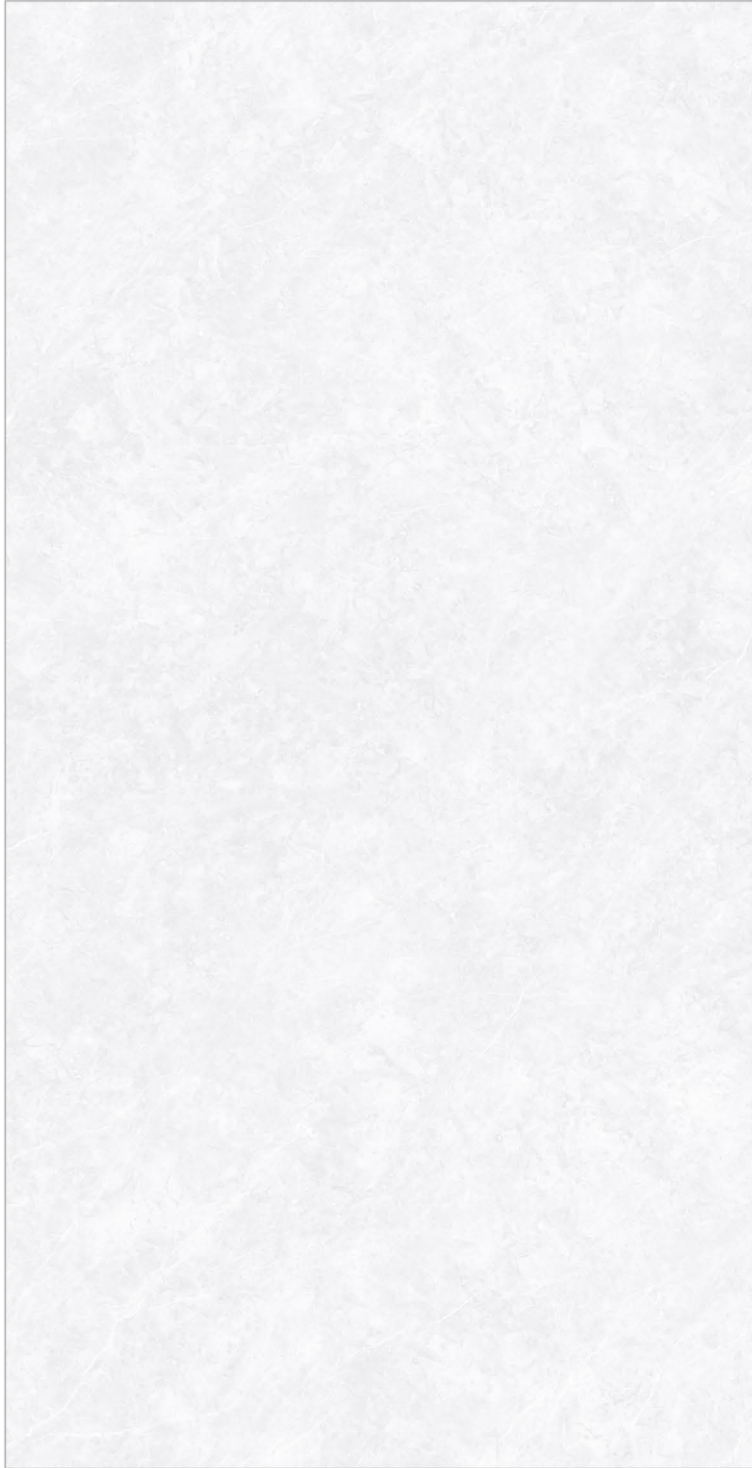
2370



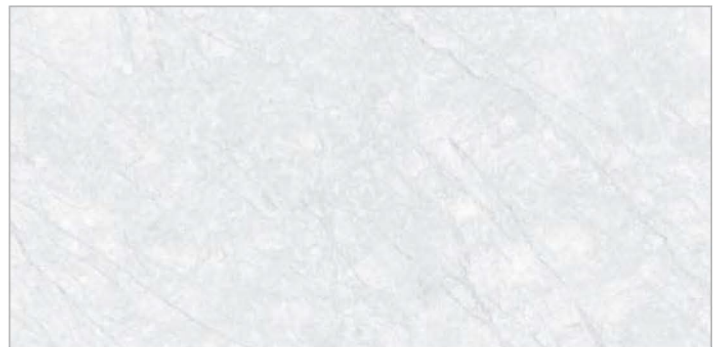
2371



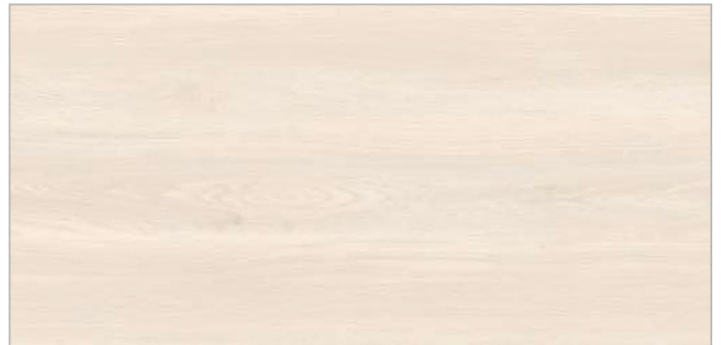
2372



2373



2374



2375



2376



2377



2378



2379



2380



2381



2382



2383



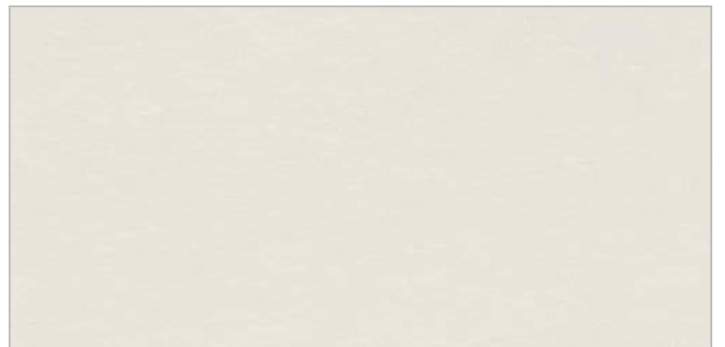
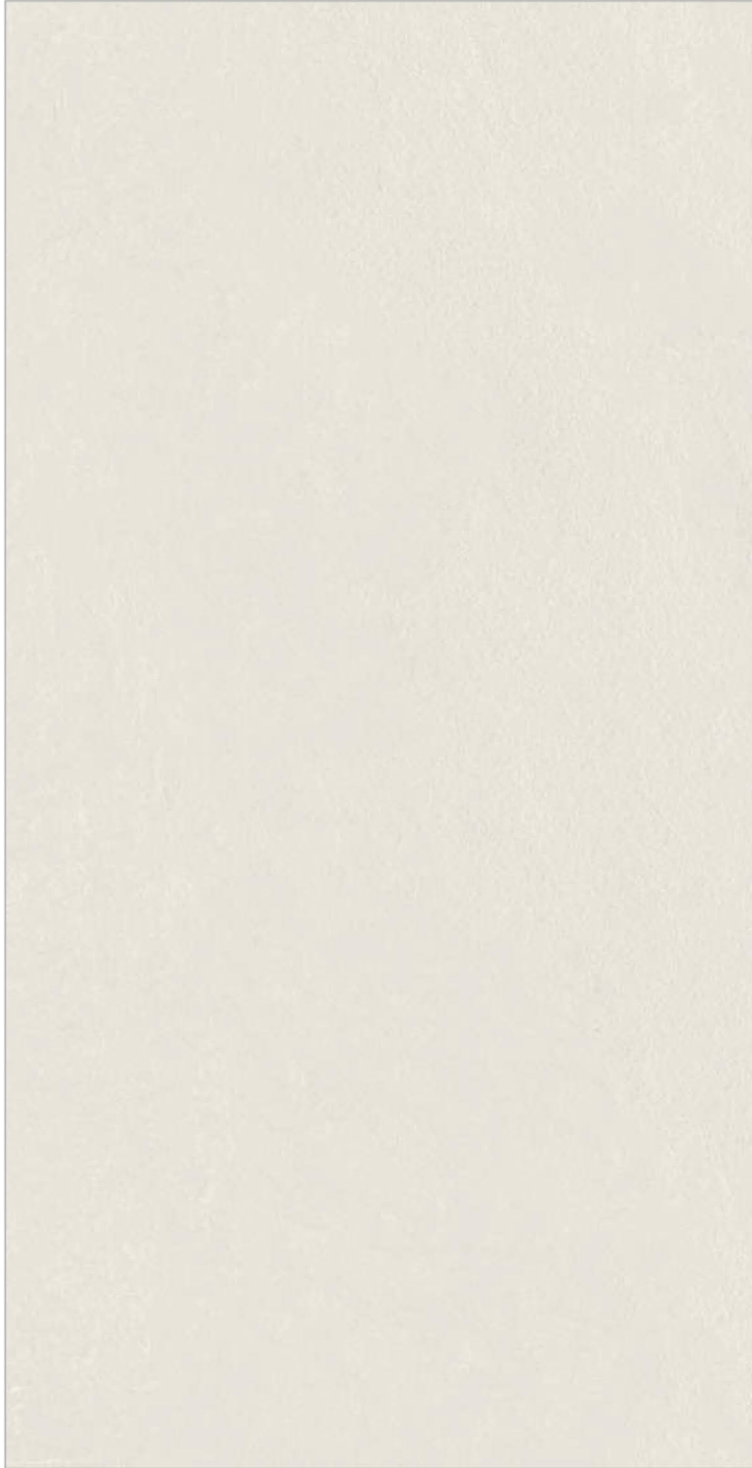
2384



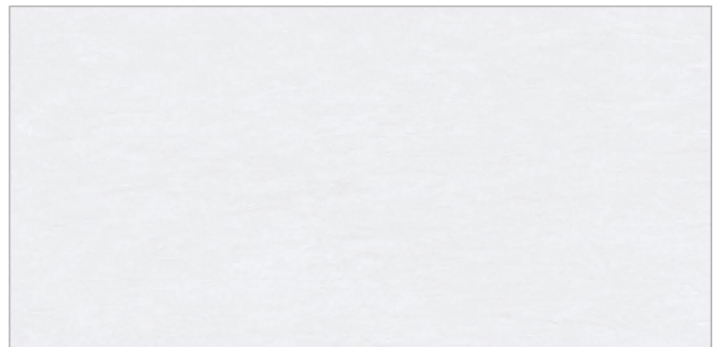
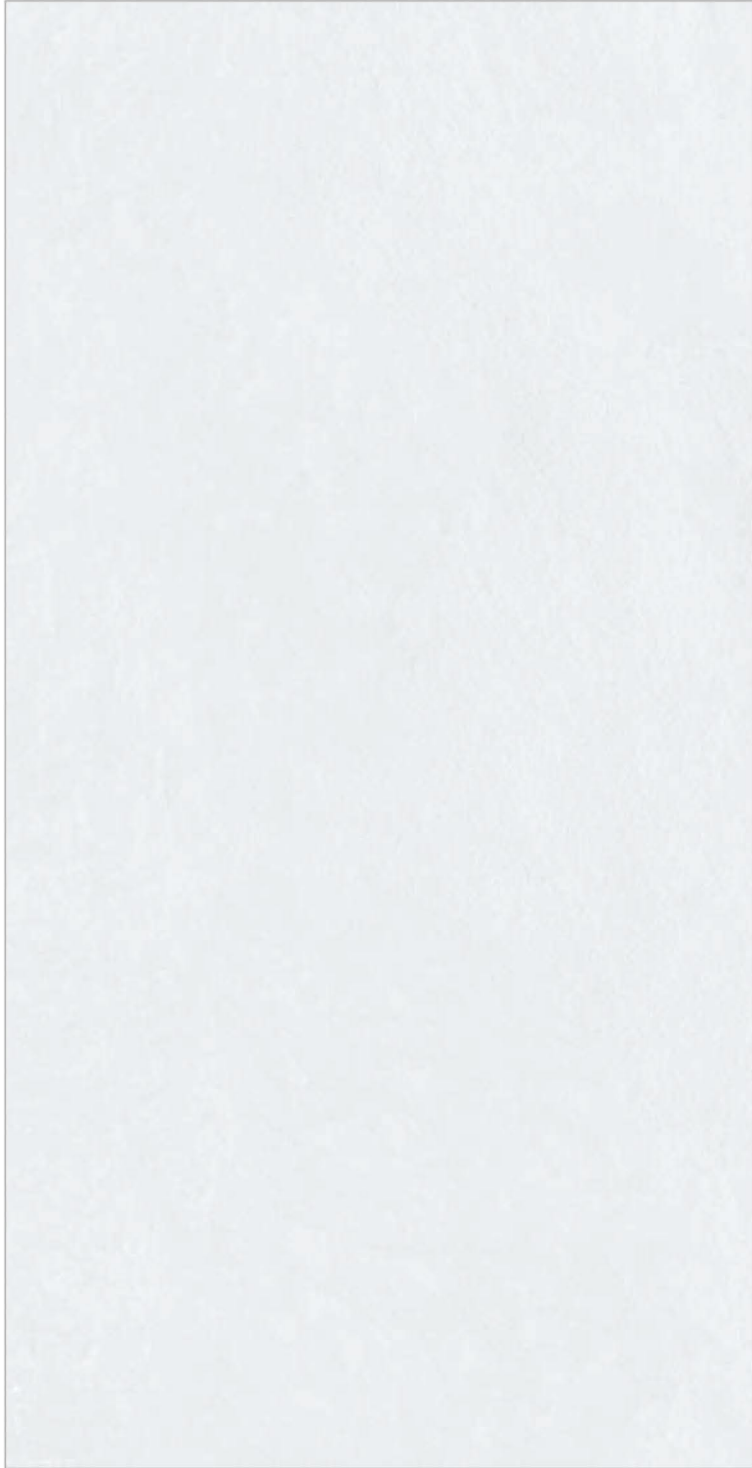
2385



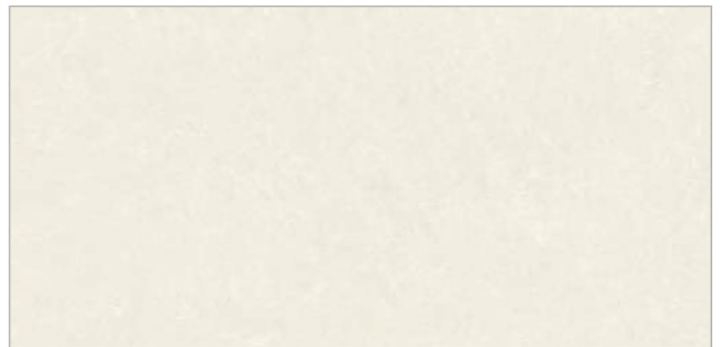
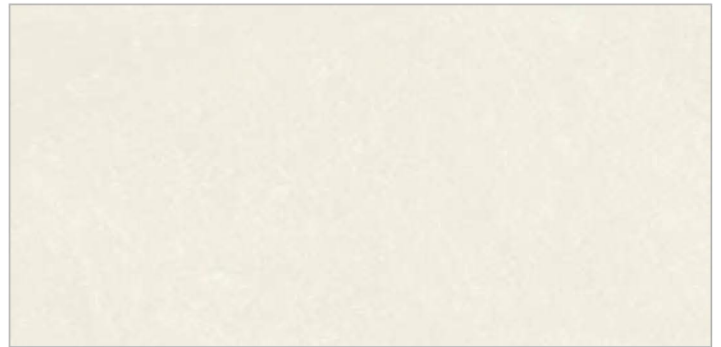
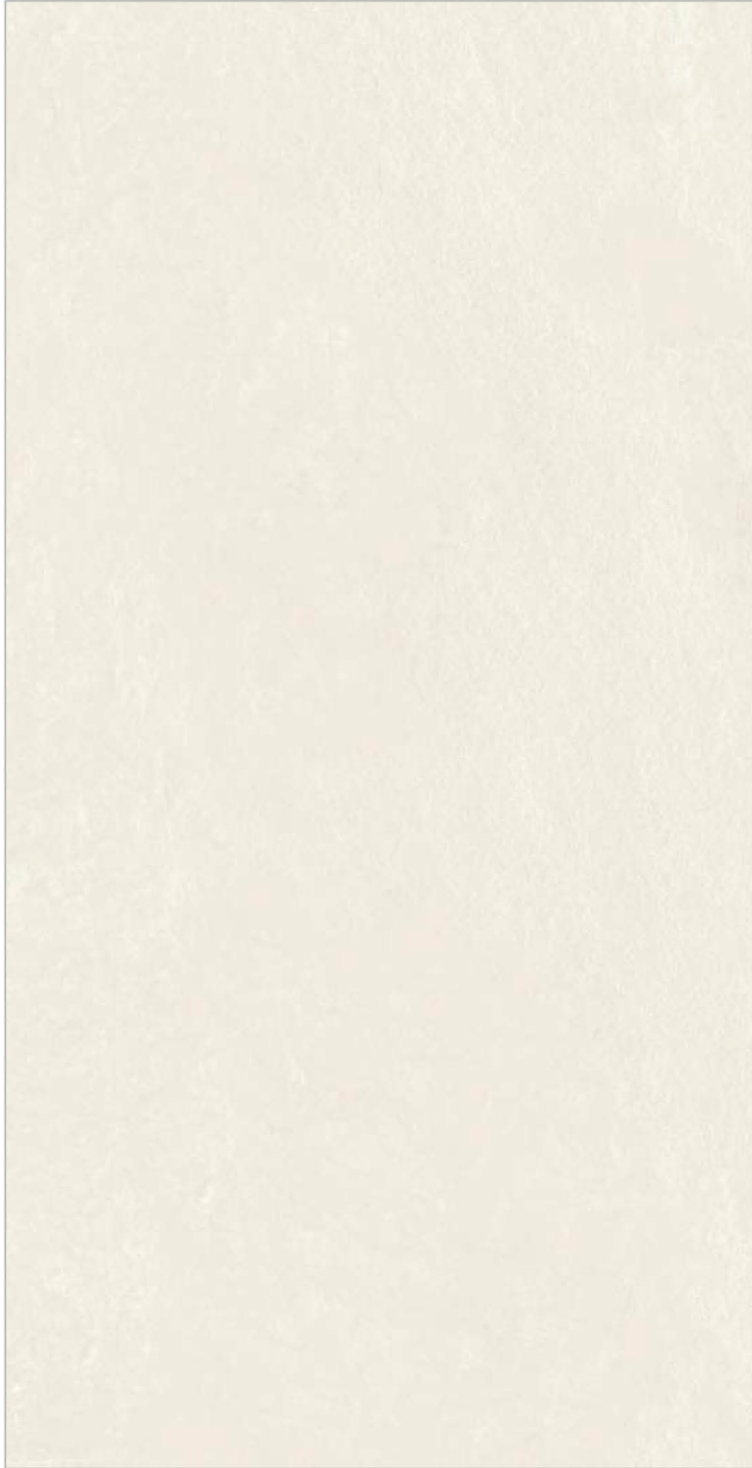
2386



2387



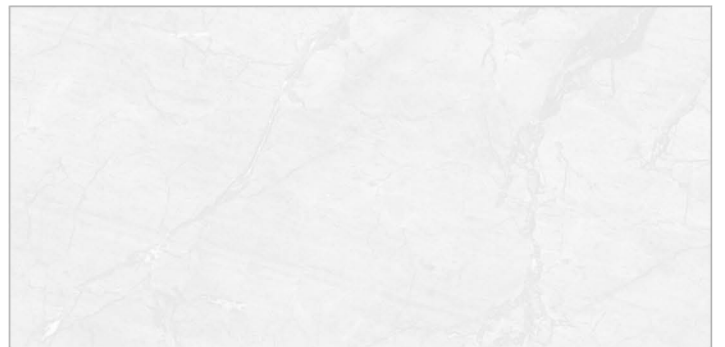
2388



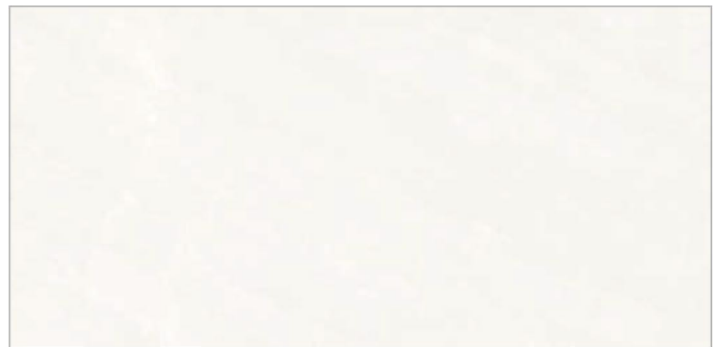
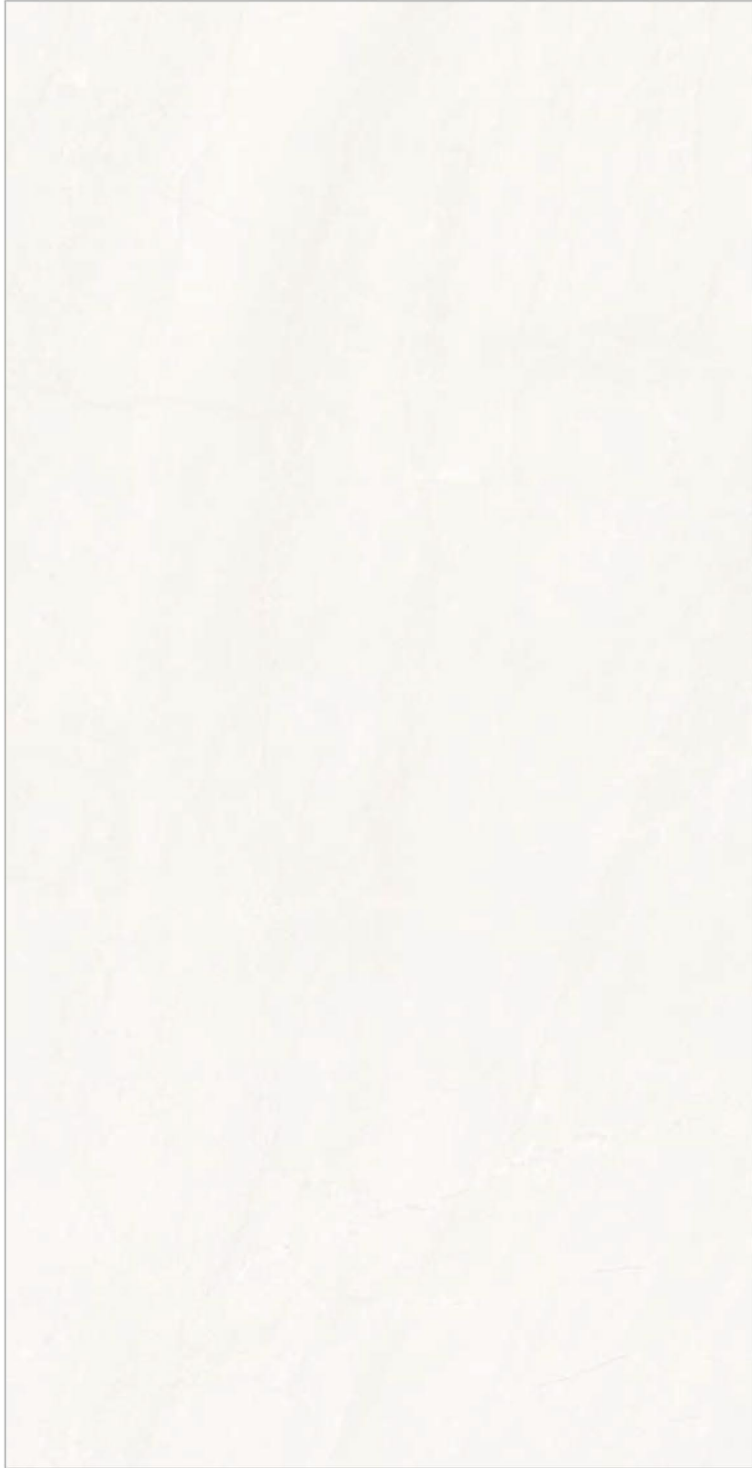
2389



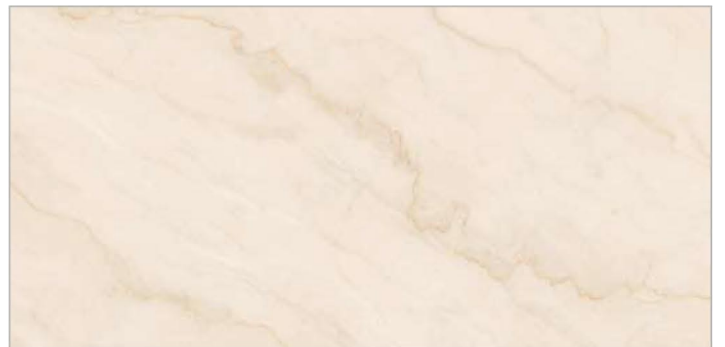
2390



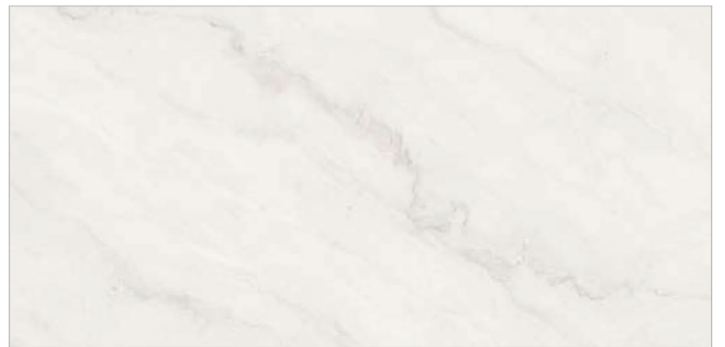
2391



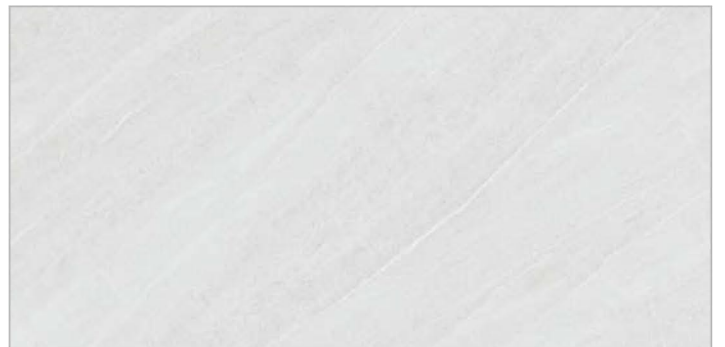
2392



2393



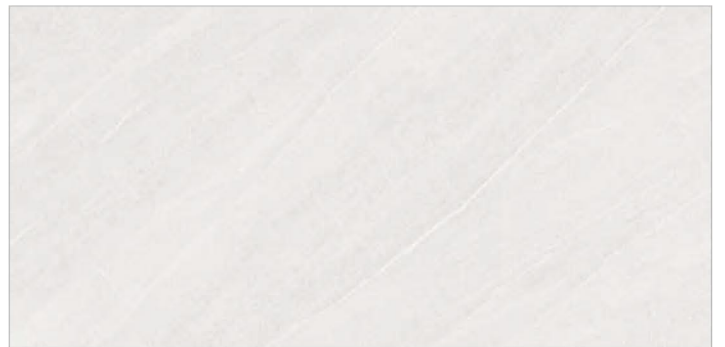
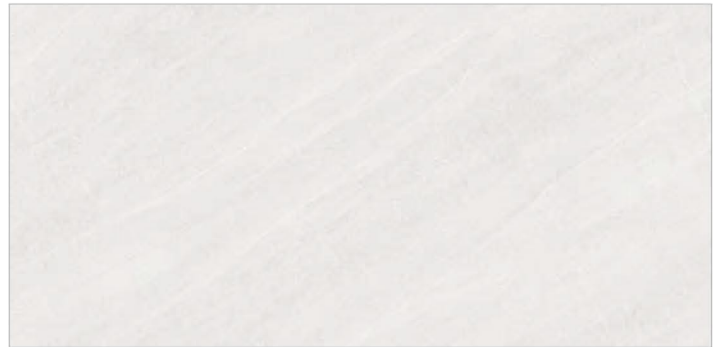
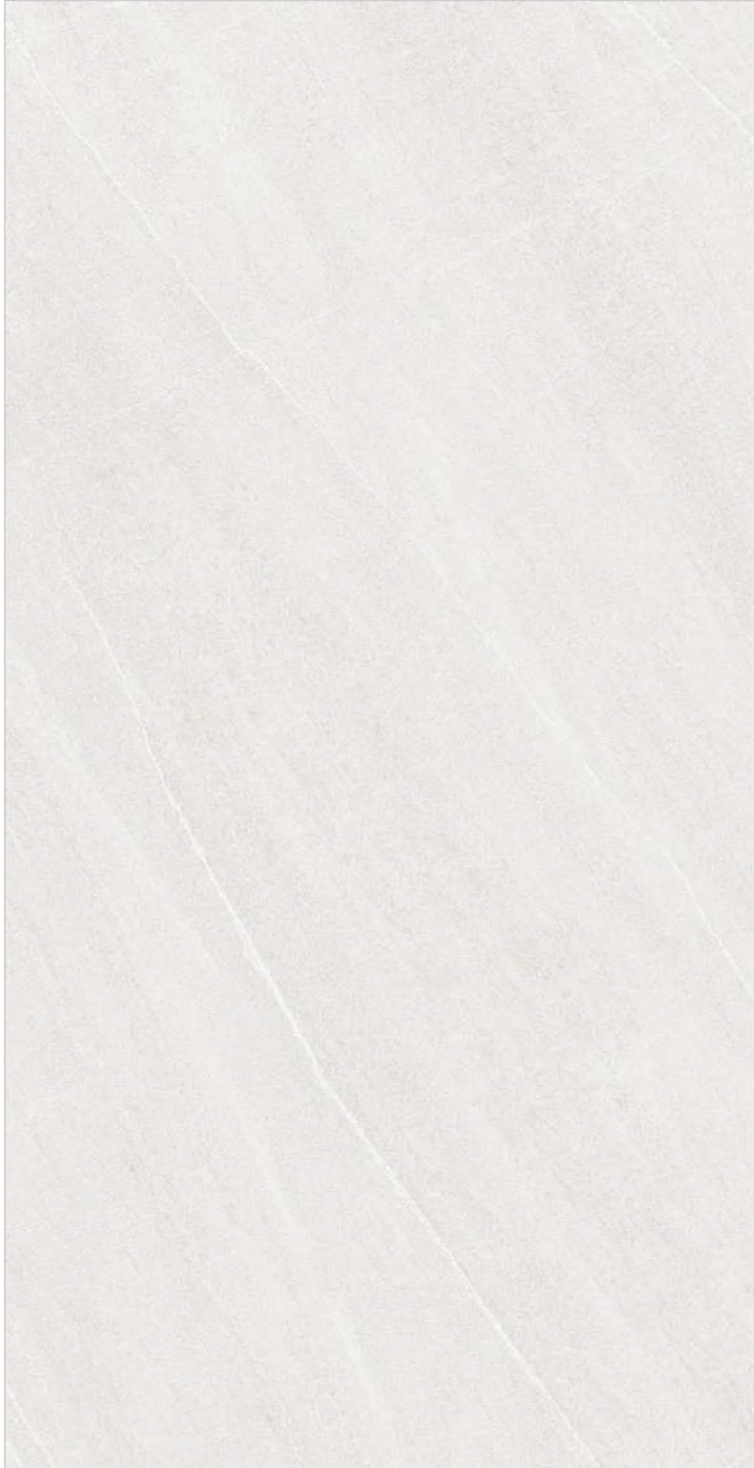
2394



2395



2396



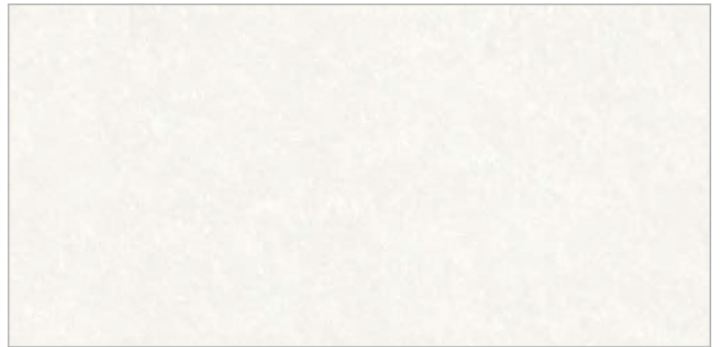
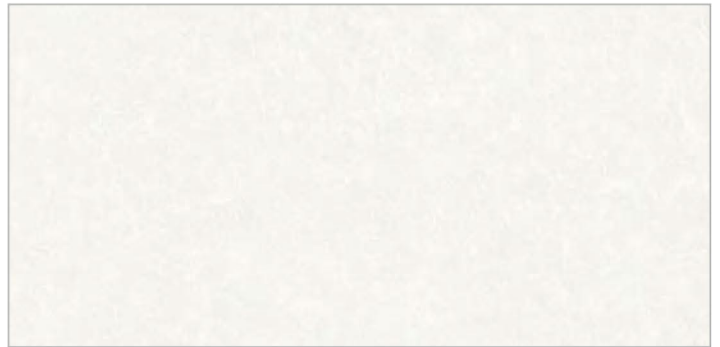
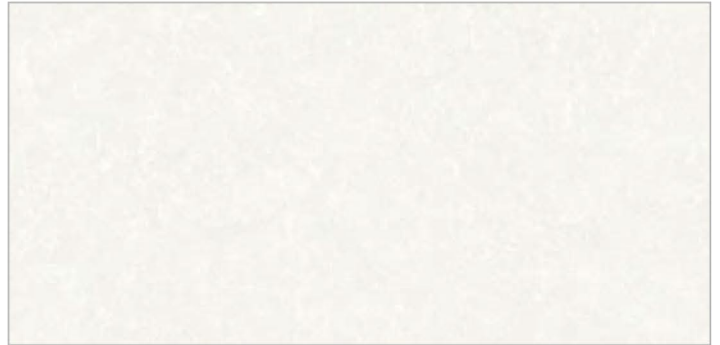
2397



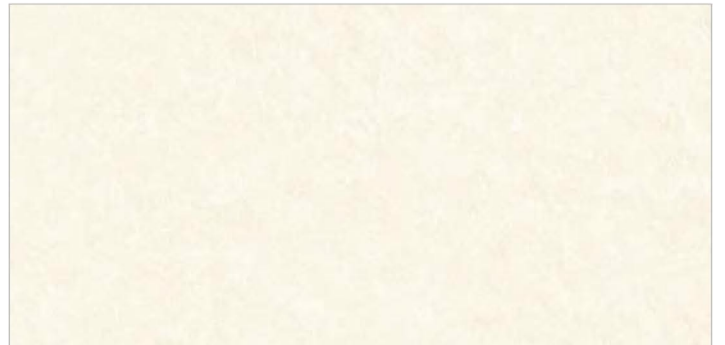
2398



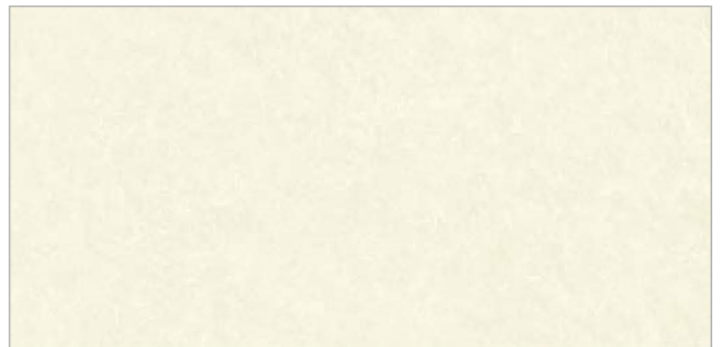
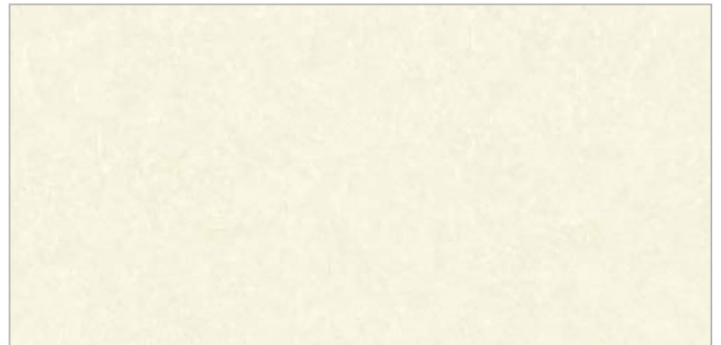
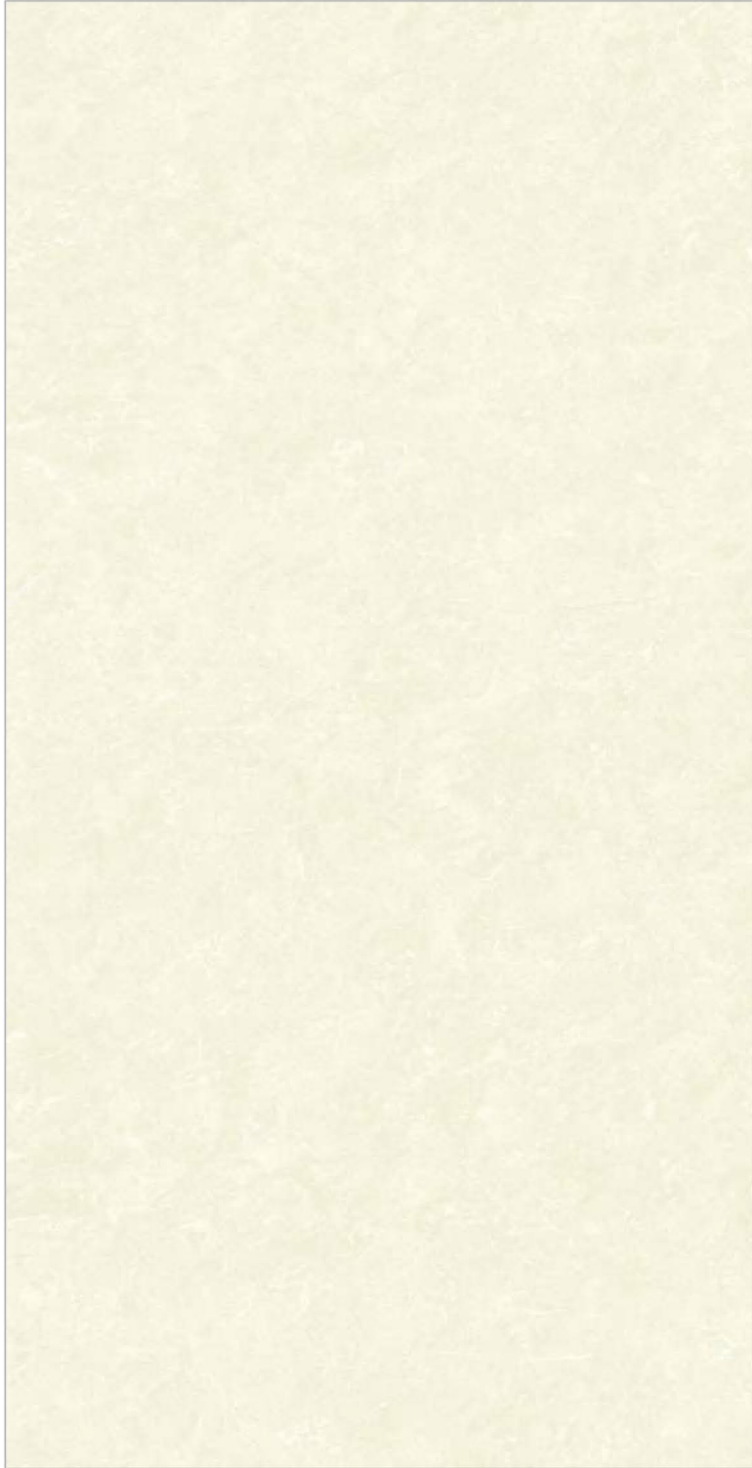
2399



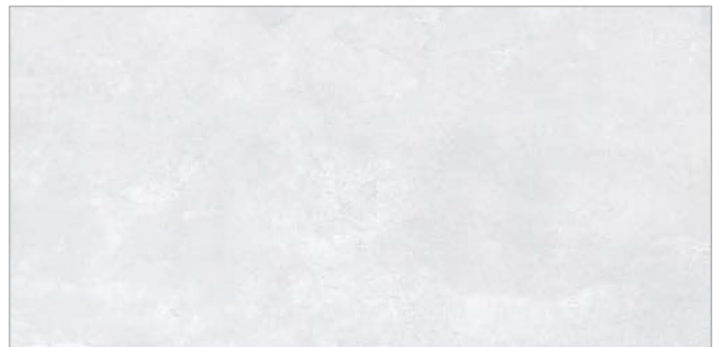
2400



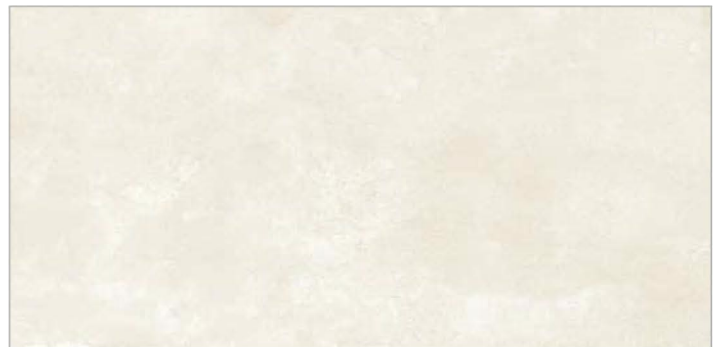
2401



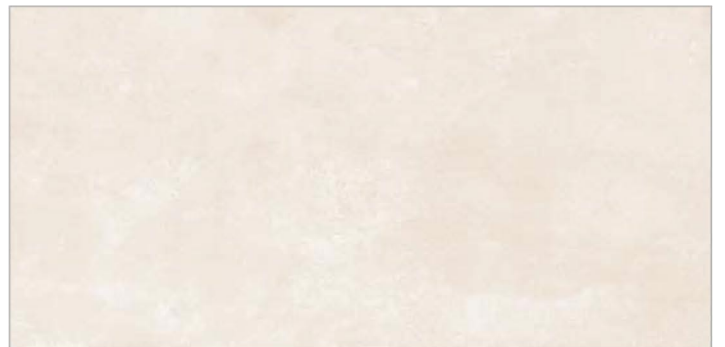
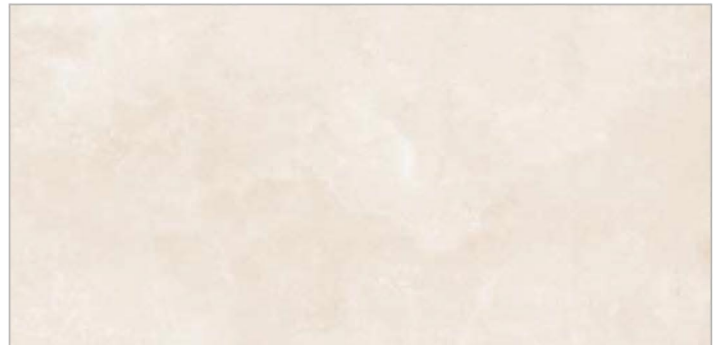
2402



2403



2404



2405



2406



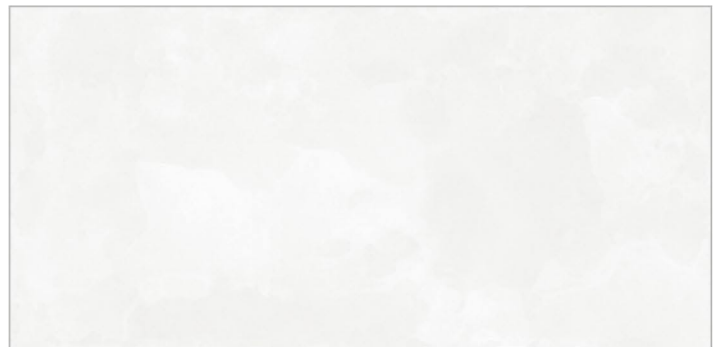
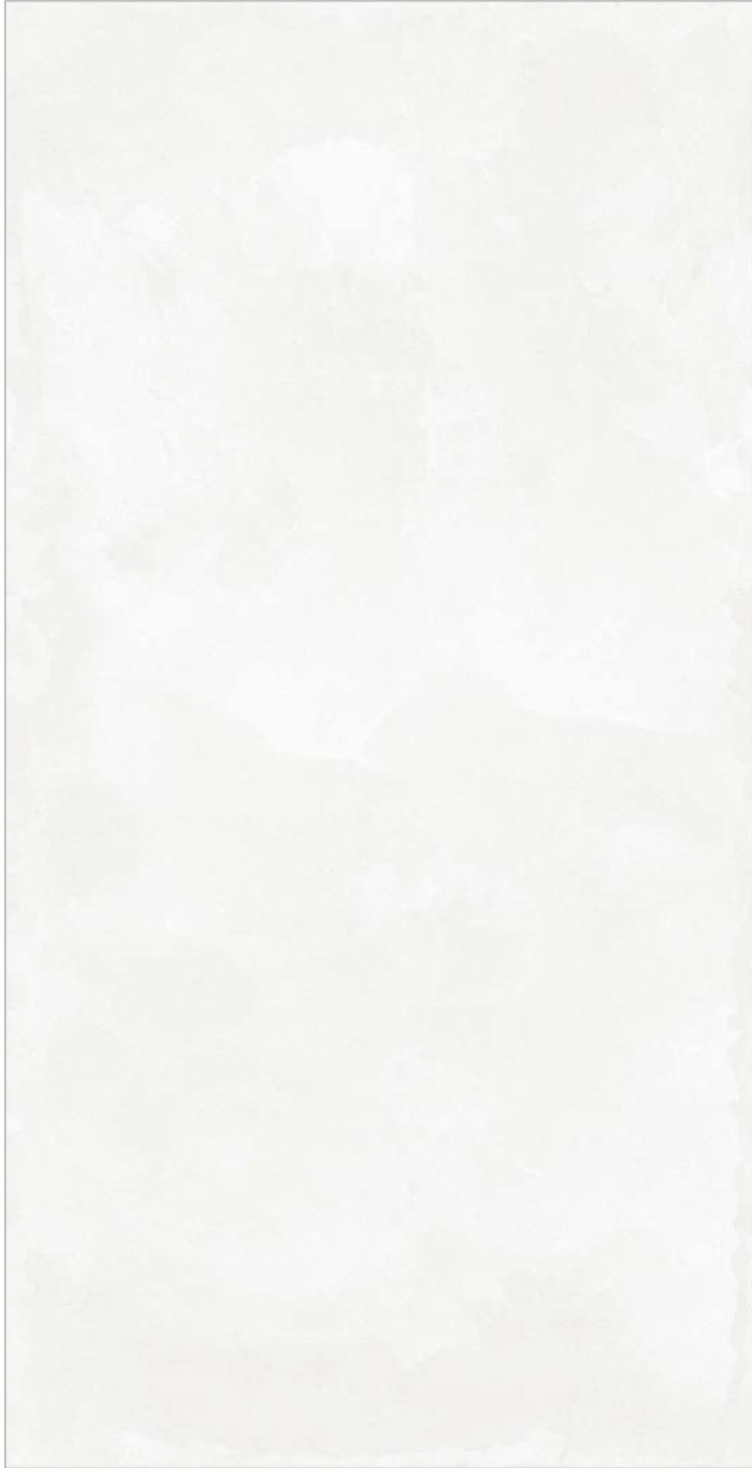
2407



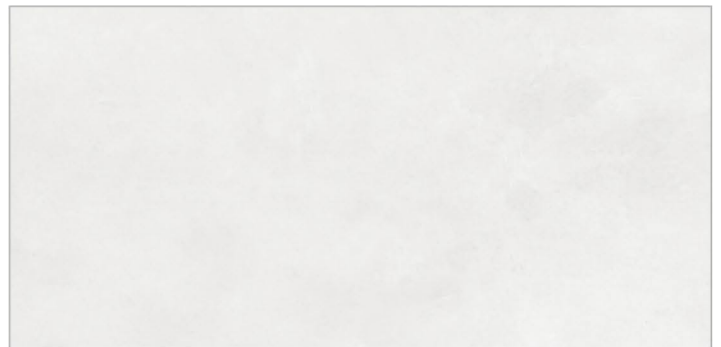
2408



2409



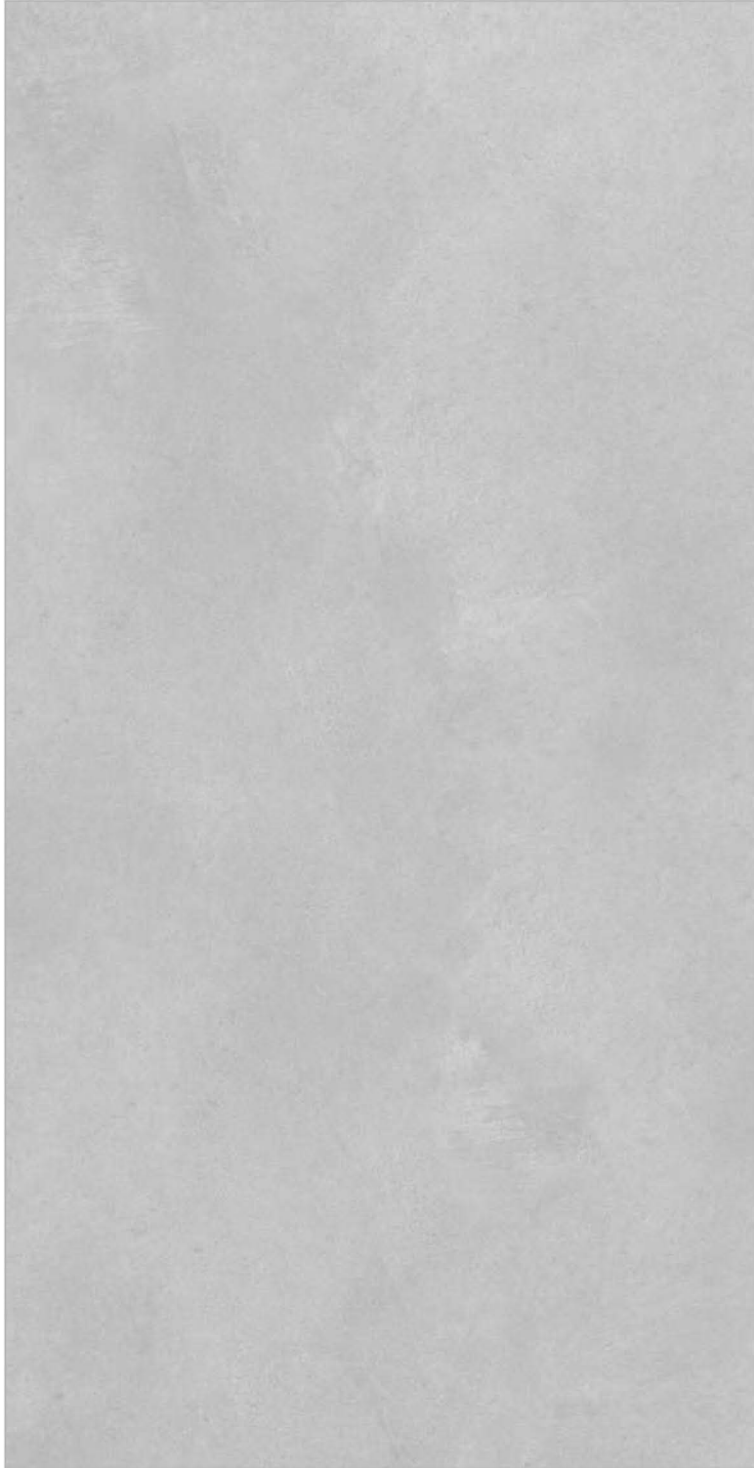
2410



2411



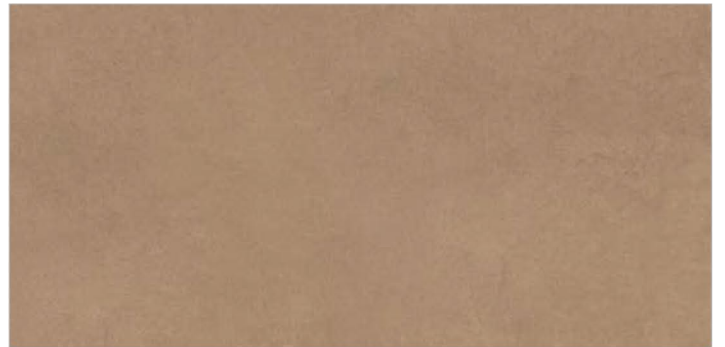
2412



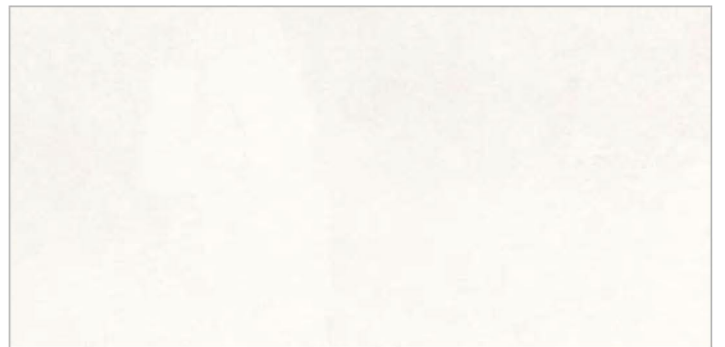
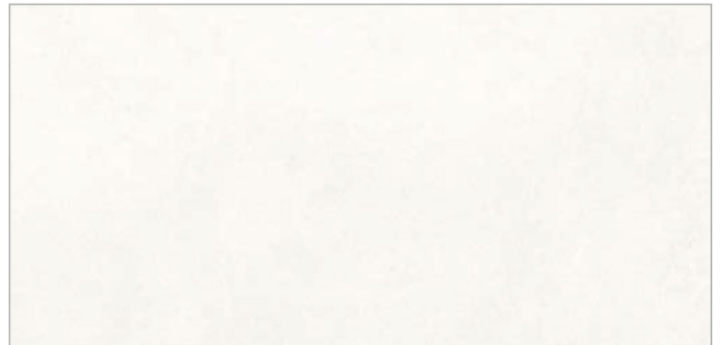
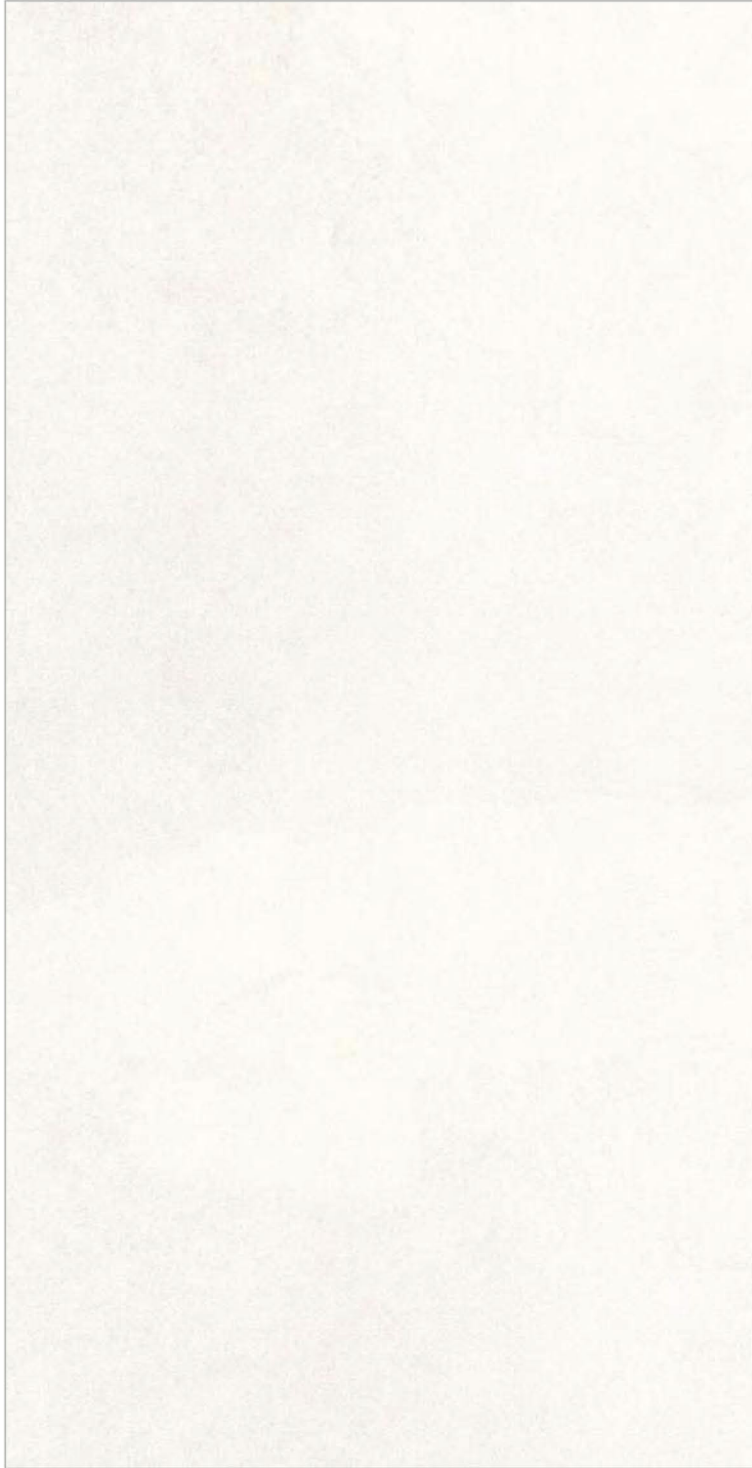
2413



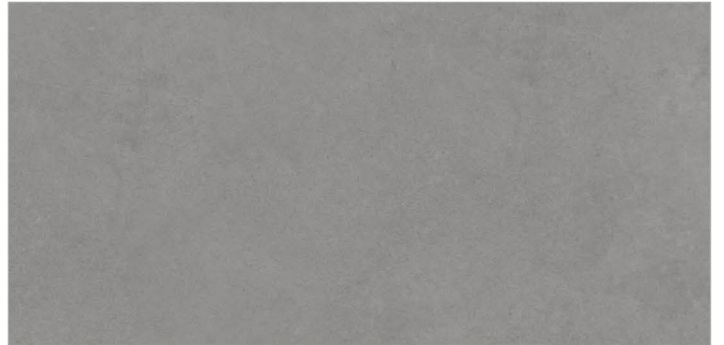
2414



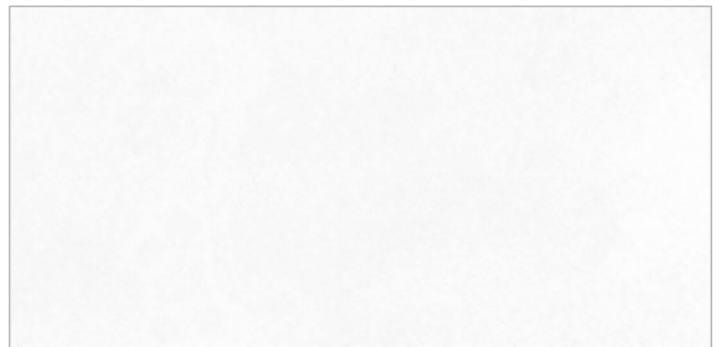
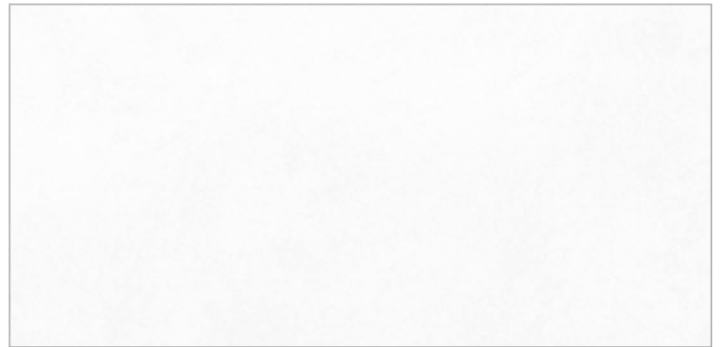
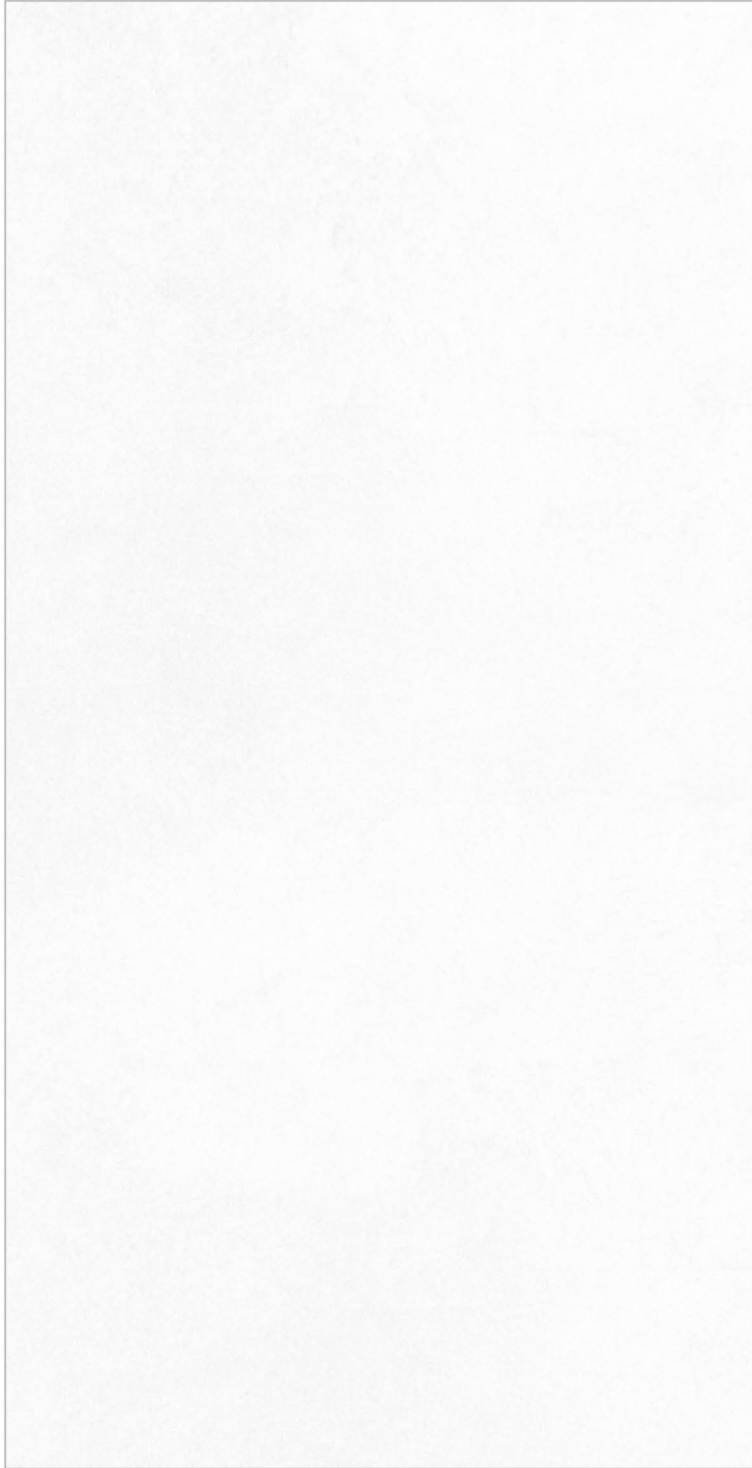
2415



2416



2417



2418



2419



2420



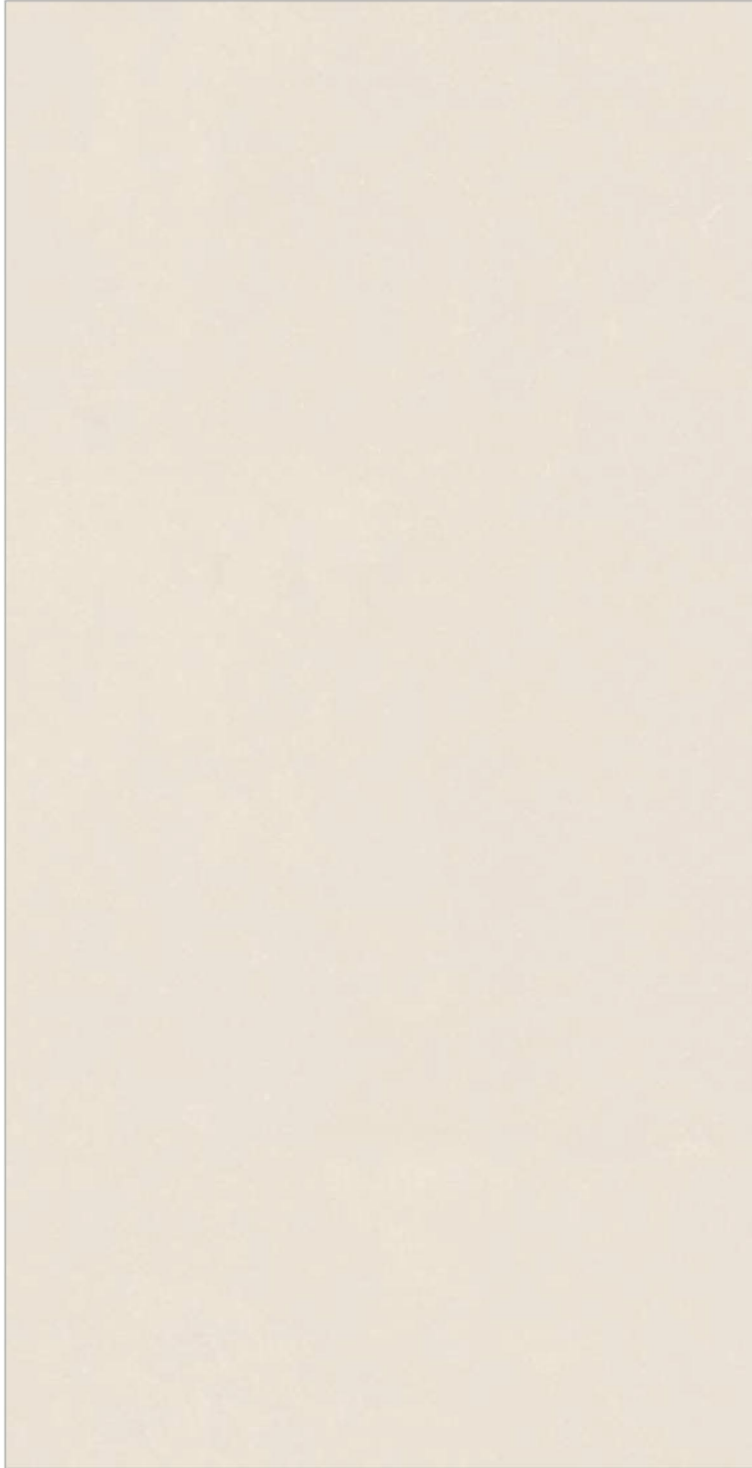
2421



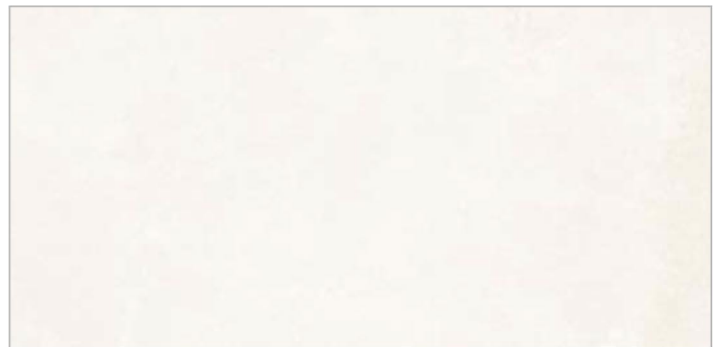
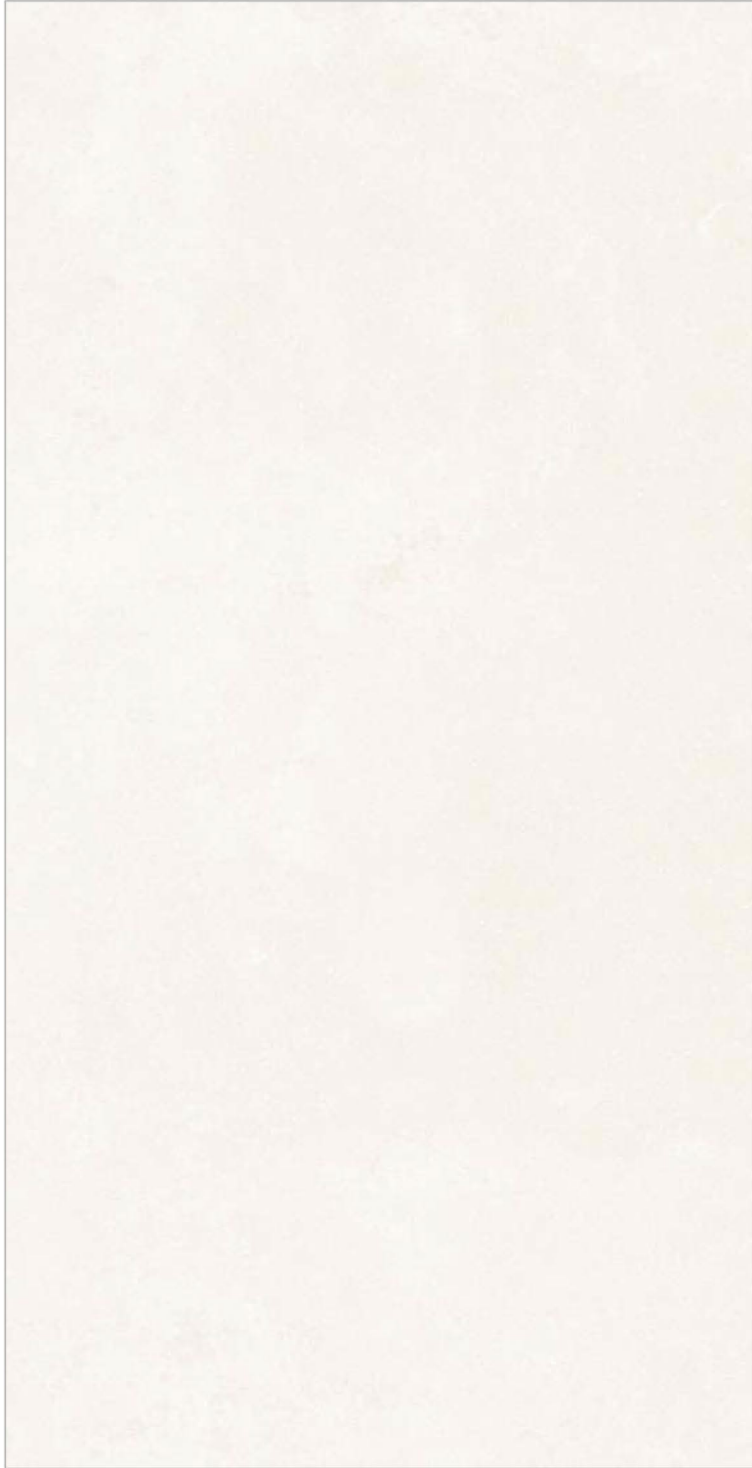
2422



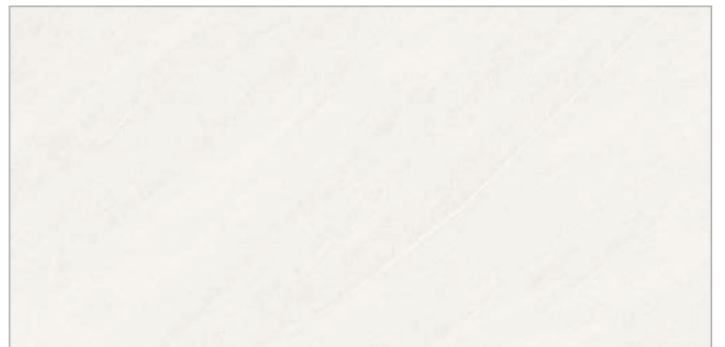
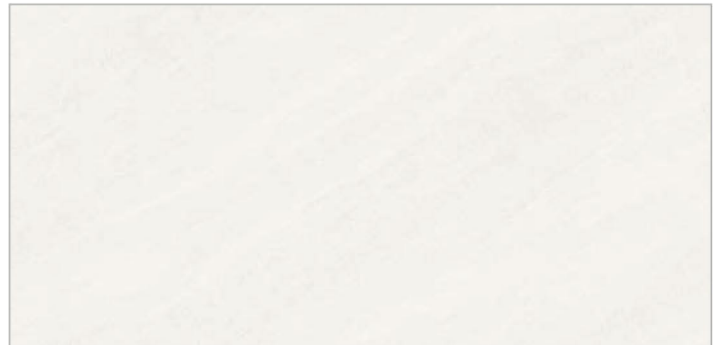
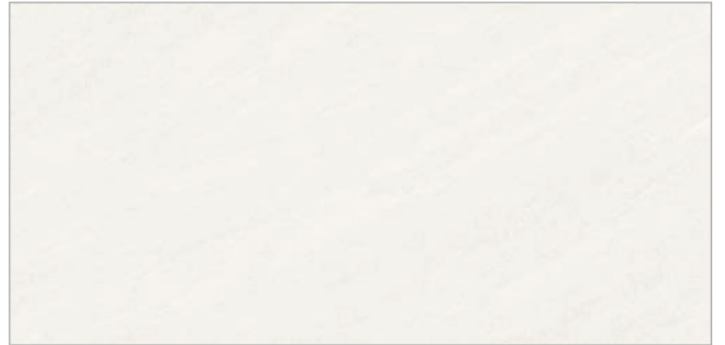
2423



2425



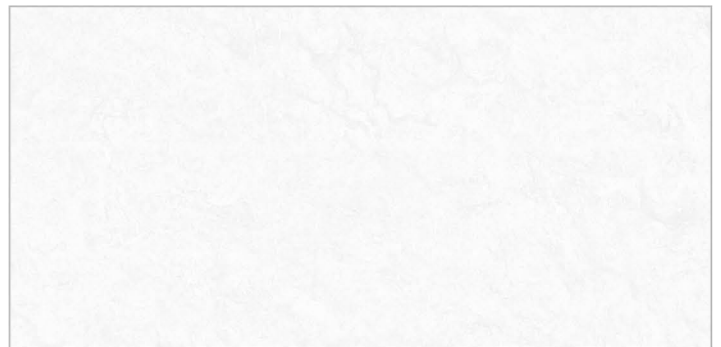
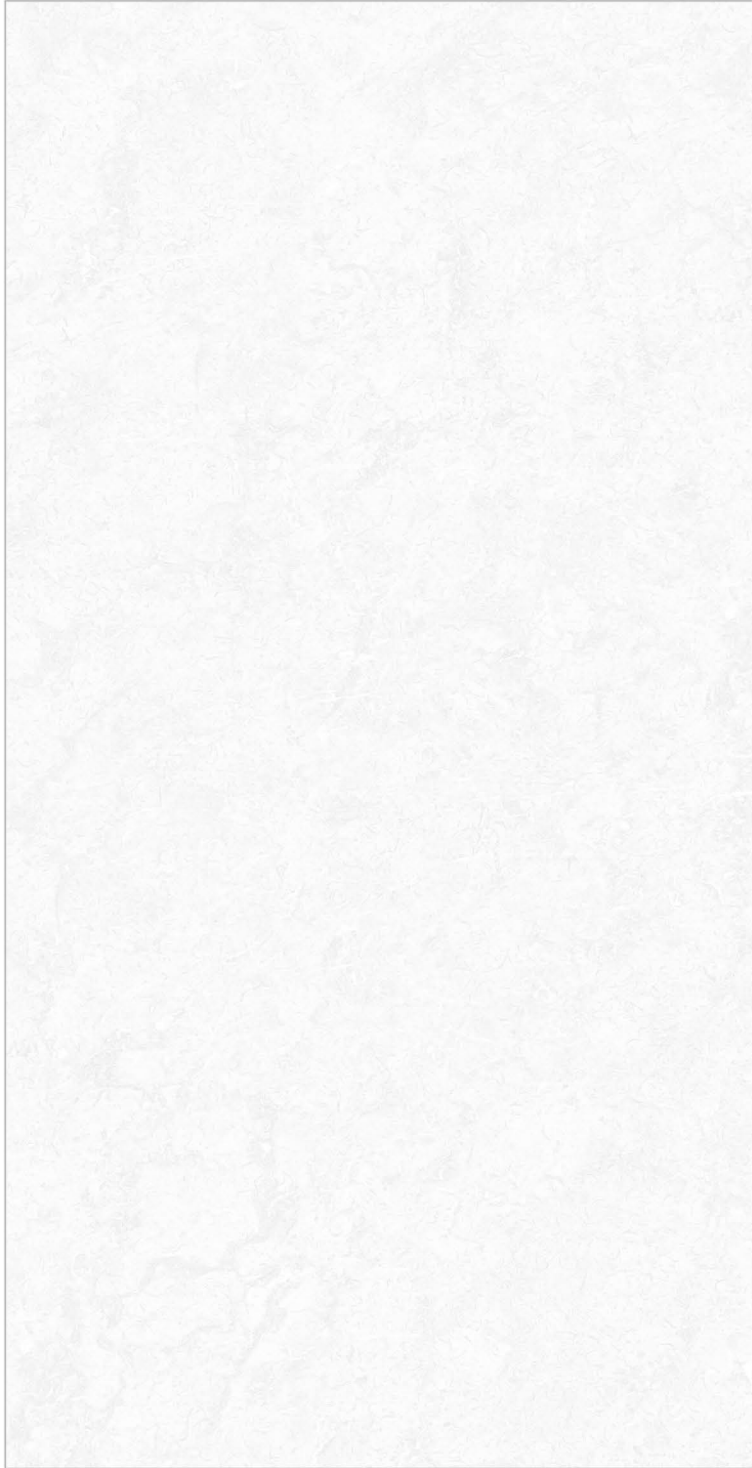
2426



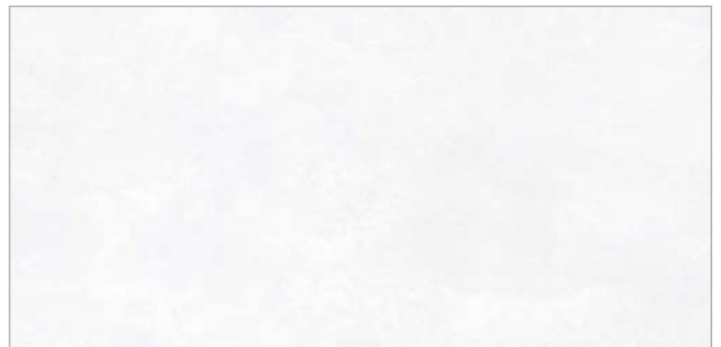
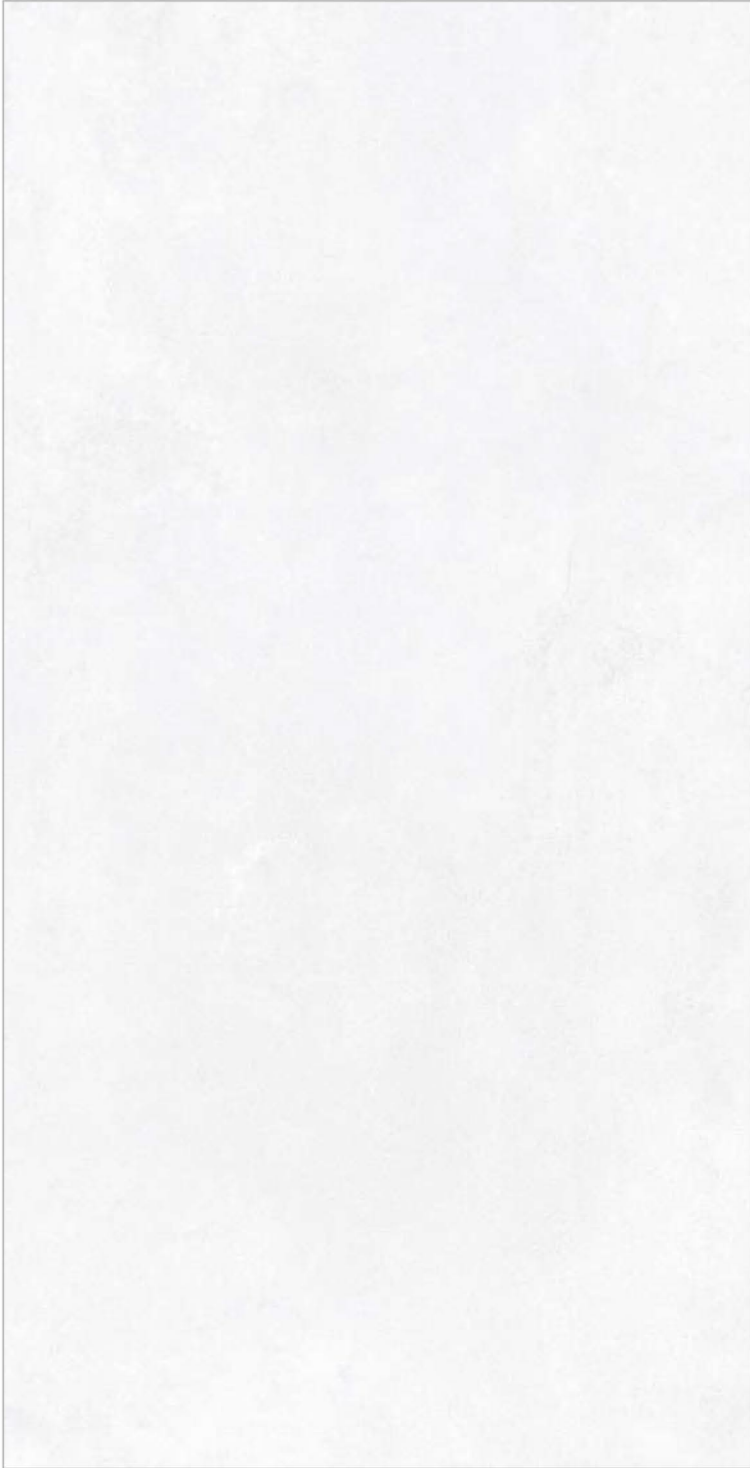
2427



2428



2429



2430



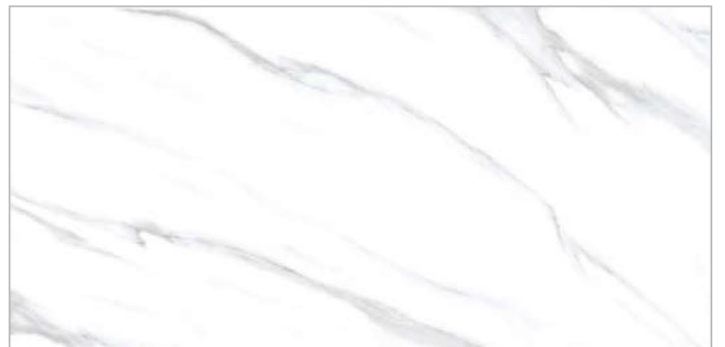
2431



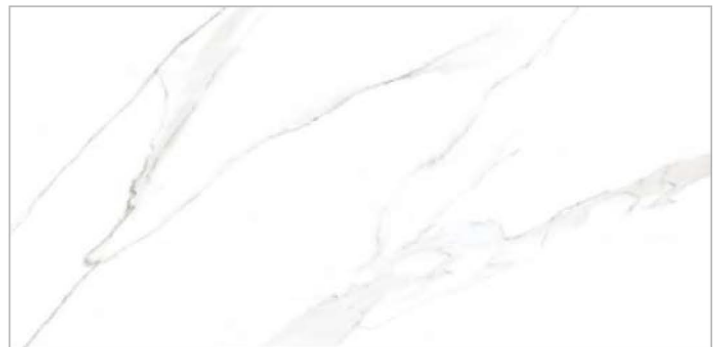
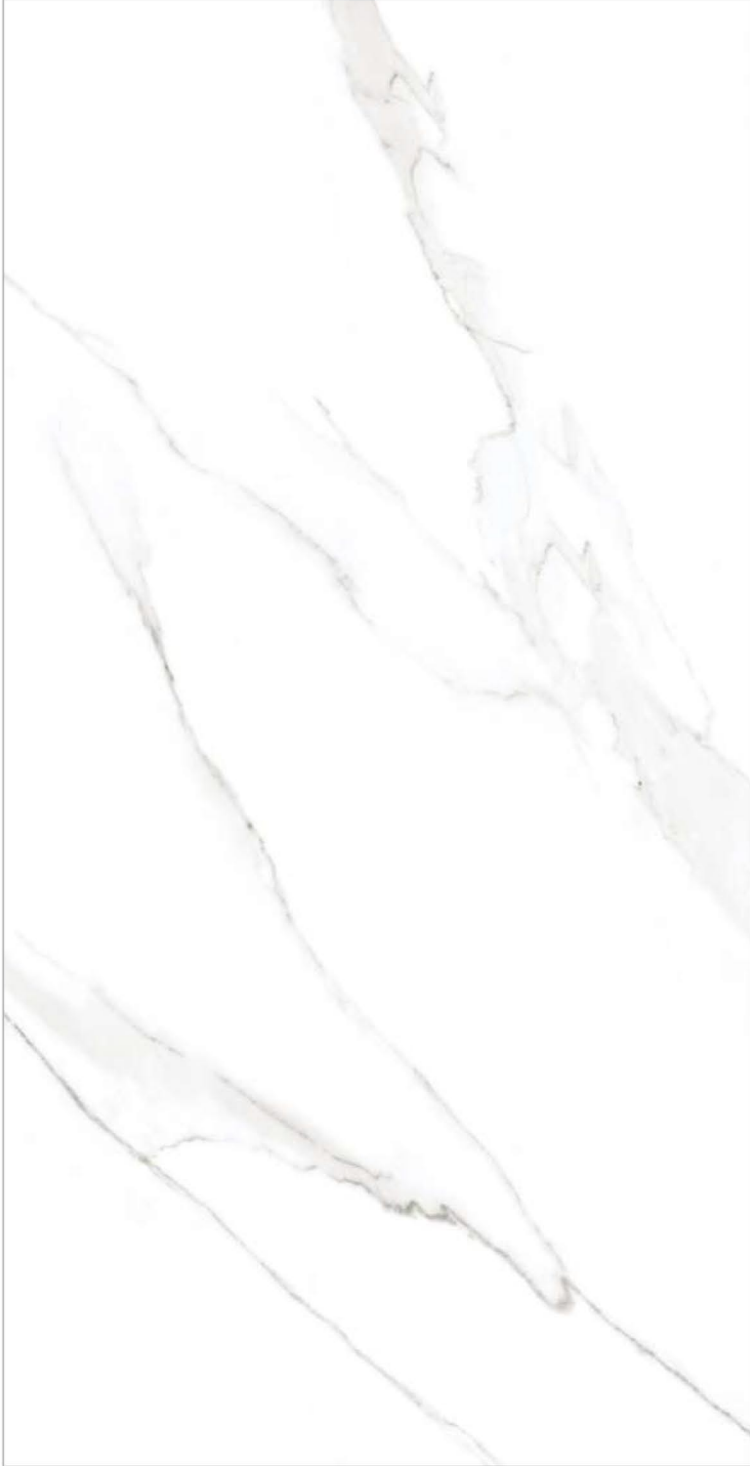
2432



2433



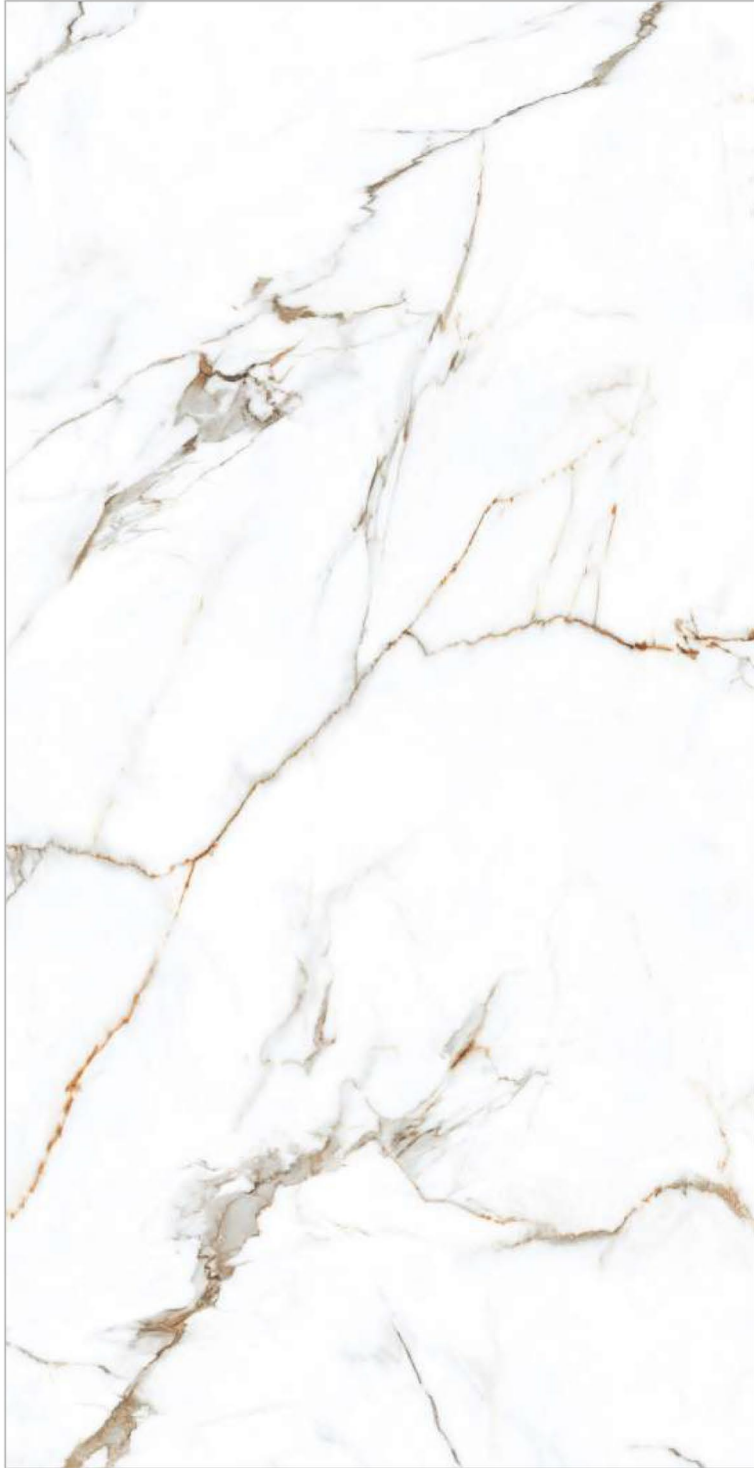
2434



2435



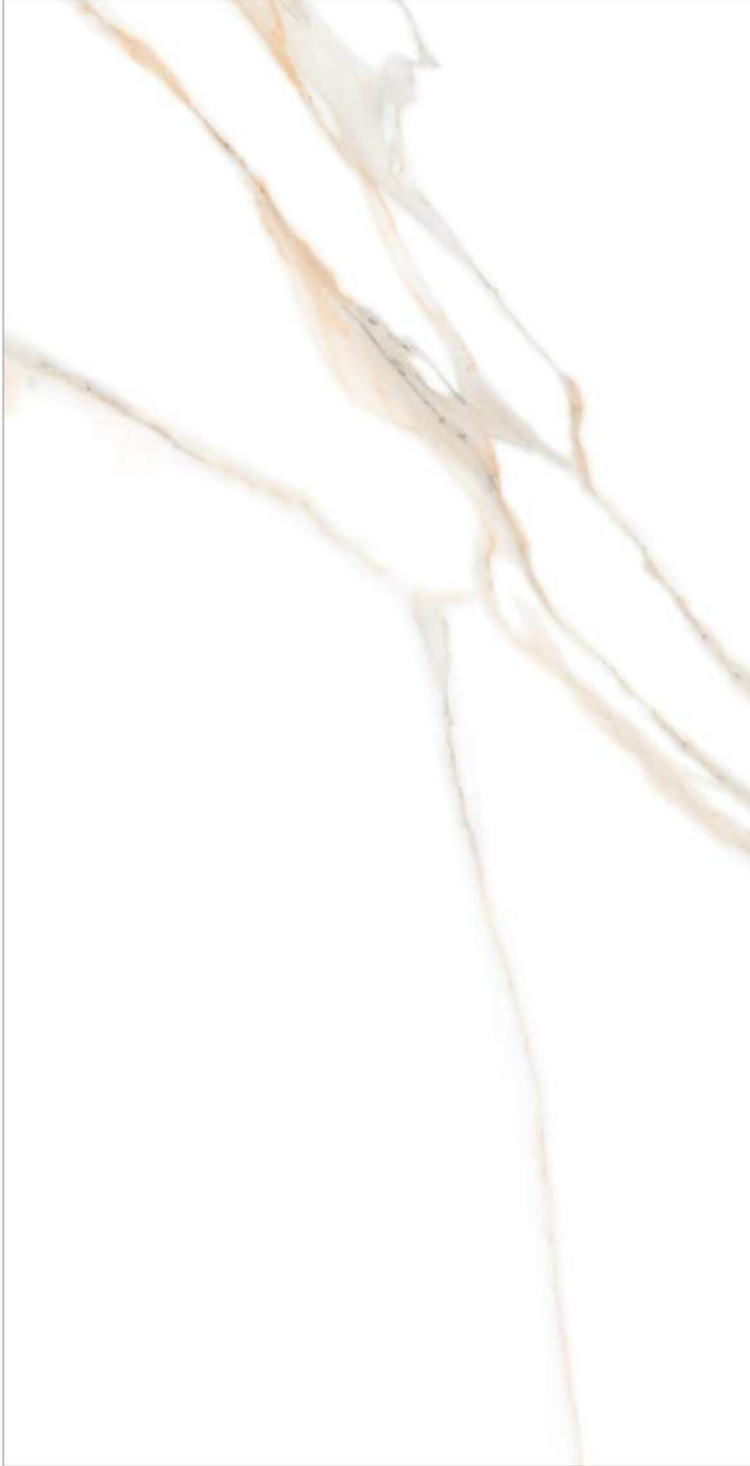
2436



2437



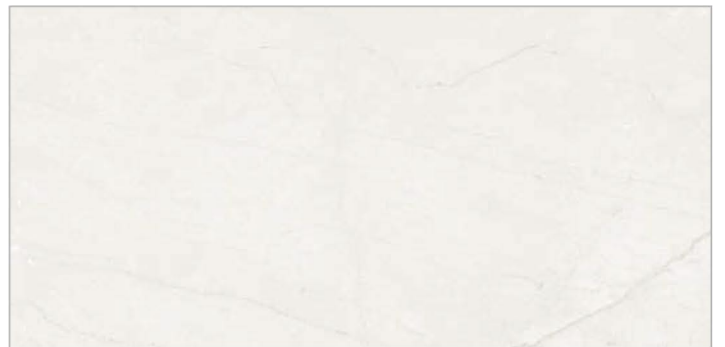
2438



2439



2440



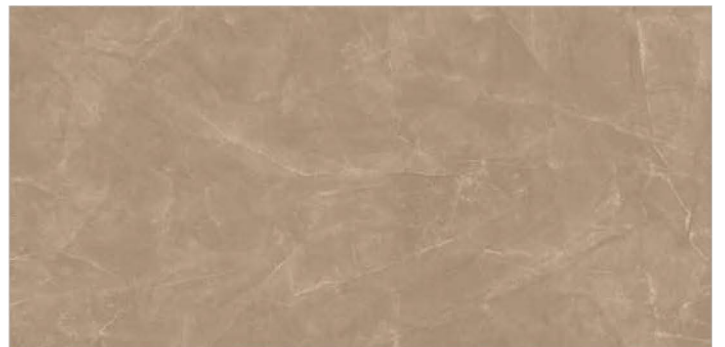
2441



2442



2443



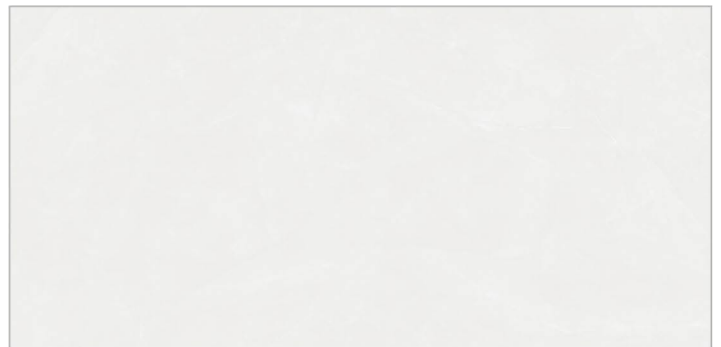
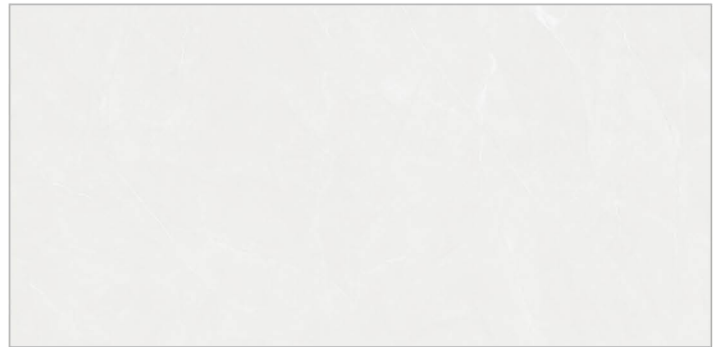
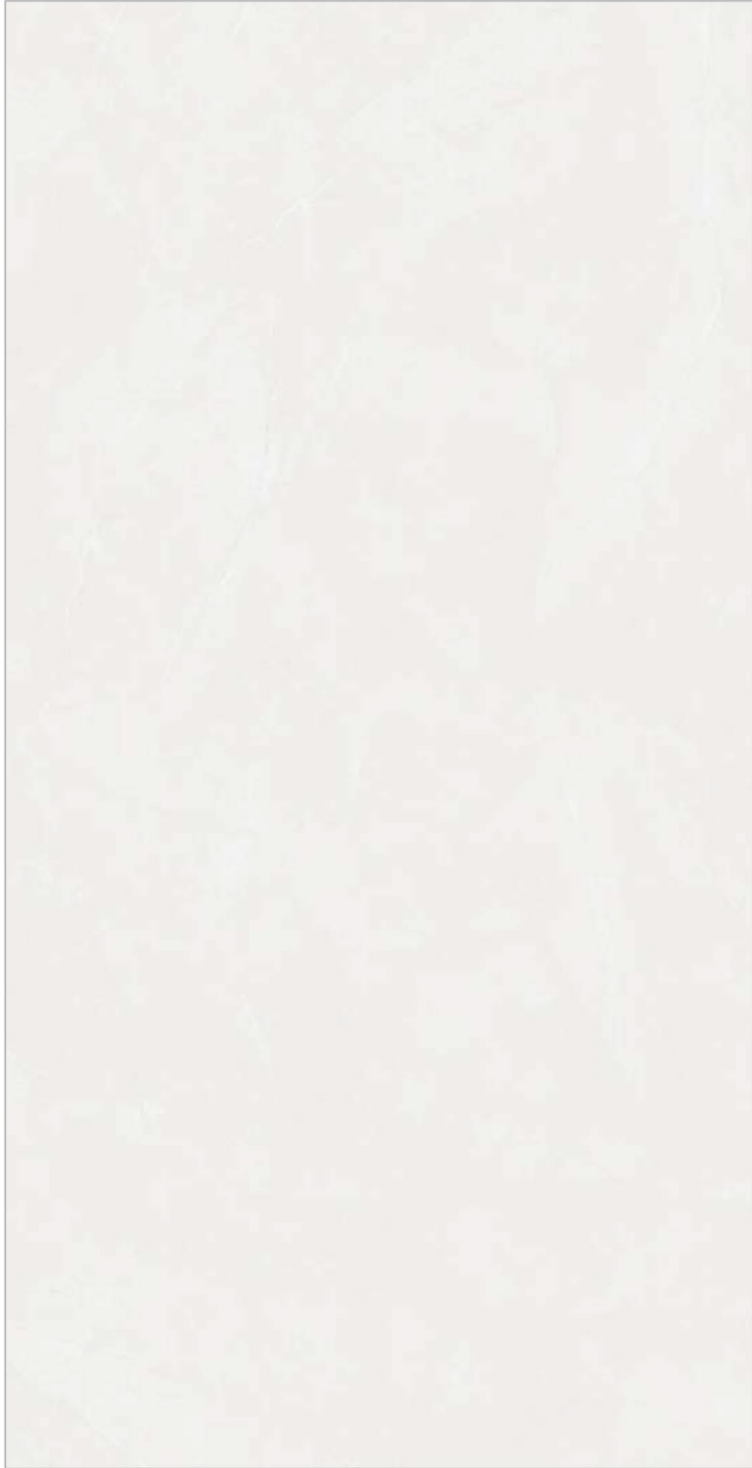
2444



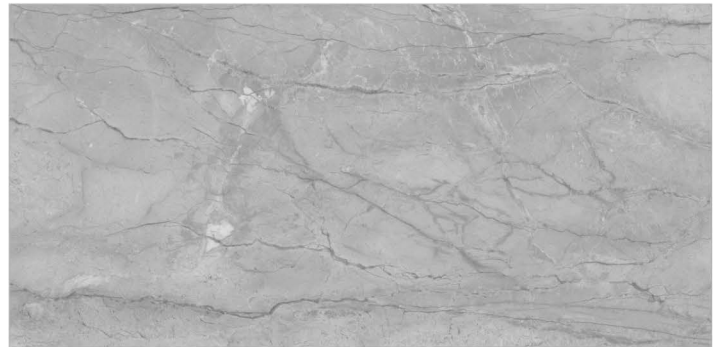
2445



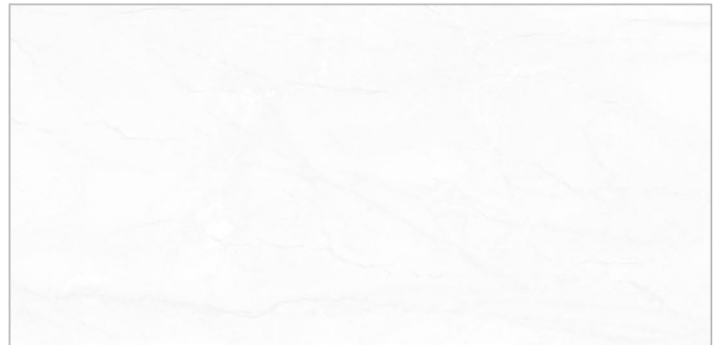
2446



2447



2448



2449

Lwin Tiles Quality Standards

Standards according to **ISO 13006: Annex G - EN 14411: Annex G.** Dry - Pressed Ceramic Tiles. **Group BIa (E b 0.5%)**

Technical Feature	Test Method	Requirements		Values	
		%	mm	%	mm

A. Dimensions and Surface Quality

Length and Width	UNI EN ISO 10545-2	± 0.6%	± 2.0	± 0.20%	± 1.0
Thickness		± 5.0%	± 0.5	± 5.00%	± 0.5
Straightness of Sides		± 0.5%	± 1.5	± 0.20%	± 1.0
Rectangularity		± 0.5%	± 2.0	± 0.20%	± 1.2
Surface Flatness		± 0.5%	± 2.0	± 0.20%	± 1.0
a) Centre curvature					
b) Edge curvature					
c) Warpage	± 0.5%	± 2.0	± 0.20%	± 1.0	
Surface Quality	A minimum of 95% of the tiles shall be free from visible defects that would impair the appearance of a major area of tiles.			Compliant	

B. Physical Properties

Water Absorption	UNI EN ISO 10545-3	$E_b \leq 0.5\%$ Individual maximum : 0.6% (absorbed water mass)	$E_b \leq 0.1\%$ (absorbed water mass)
Breaking Strength	UNI EN ISO 10545-4	Min. 1300 N	≥ 1700 N
Modulus of Rupture		Average minimum 35 N/mm ² Individual minimum 32 N/mm ²	≥ 37 N/mm ²
Frost Resistance	UNI EN ISO 10545-12	Required	Compliant
Coefficient of Linear Thermal Expansion From Ambient Temperature to 100°C	UNI EN ISO 10545-8	Required	6×10^{-6} K ⁻¹ max
Scratch Hardness (Mohs scale)	EN 101	Declared by the producer	3 to 6 Depends on Finish & Color
Crazing Resistance	UNI EN ISO 10545-11	Declared by the producer	4 Cycle Pass

C. Chemical Properties

Resistance to Staining	UNI EN ISO 10545-14	Minimum Class 3	5
Resistance to Household Chemicals and Swimming Pool Salts	UNI EN ISO 10545-13	Minimum GB	GA
Resistance to Low Concentrations of Acids and Alkalies		To be reported	GLA
Resistance to High Concentrations of Acids and Alkalies		To be reported	GHA

Note: Colours shown are as accurate as the limitations of the printing results on paper are possible. Prospective customers are advised to inspect a sample of the tile before placing the order. Every effort has been taken to ensure the accuracy of the information given. However, the company reserves its right to change/alter the specifications without any prior notice. Sometime shade variation or size variation may occur, as this is inherent property of ceramic tile industry. Before fixing the tiles, all are advised to follow the laying instructions printed on the corrugated box of the tile. Company does not take/carry any responsibility of what so ever nature, once tiles are laid.



Office

Om Decora 9 Square, 150 Feet Ring Road,
Nana Muva, Rajkot Gujarat 360003 - INDIA

Factory

Jivapar Jetpar Road,
Near Levita Granito LLP Morbi Gujarat 363630 - INDIA
www.L-wintiles.com
Info@L-wintiles.com